

# **Instruction Manual**



**TMS805**  
**RapidIO Bus Support**  
**071-1081-00**

Copyright © Tektronix, Inc. All rights reserved.

Tektronix products are covered by U.S. and foreign patents, issued and pending. Information in this publication supercedes that in all previously published material. Specifications and price change privileges reserved.

Tektronix, Inc., P.O. Box 500, Beaverton, OR 97077

TEKTRONIX and TEK are registered trademarks of Tektronix, Inc.

MagniVu is a trademark of Tektronix, Inc.

## **SOFTWARE WARRANTY**

Tektronix warrants that the media on which this software product is furnished and the encoding of the programs on the media will be free from defects in materials and workmanship for a period of three (3) months from the date of shipment. If a medium or encoding proves defective during the warranty period, Tektronix will provide a replacement in exchange for the defective medium. Except as to the media on which this software product is furnished, this software product is provided "as is" without warranty of any kind, either express or implied. Tektronix does not warrant that the functions contained in this software product will meet Customer's requirements or that the operation of the programs will be uninterrupted or error-free.

In order to obtain service under this warranty, Customer must notify Tektronix of the defect before the expiration of the warranty period. If Tektronix is unable to provide a replacement that is free from defects in materials and workmanship within a reasonable time thereafter, Customer may terminate the license for this software product and return this software product and any associated materials for credit or refund.

**THIS WARRANTY IS GIVEN BY TEKTRONIX IN LIEU OF ANY OTHER WARRANTIES, EXPRESS OR IMPLIED. TEKTRONIX AND ITS VENDORS DISCLAIM ANY IMPLIED WARRANTIES OF MERCHANTABILITY OR FITNESS FOR A PARTICULAR PURPOSE. TEKTRONIX' RESPONSIBILITY TO REPLACE DEFECTIVE MEDIA OR REFUND CUSTOMER'S PAYMENT IS THE SOLE AND EXCLUSIVE REMEDY PROVIDED TO THE CUSTOMER FOR BREACH OF THIS WARRANTY. TEKTRONIX AND ITS VENDORS WILL NOT BE LIABLE FOR ANY INDIRECT, SPECIAL, INCIDENTAL, OR CONSEQUENTIAL DAMAGES IRRESPECTIVE OF WHETHER TEKTRONIX OR THE VENDOR HAS ADVANCE NOTICE OF THE POSSIBILITY OF SUCH DAMAGES.**



# Table of Contents

<b>Preface</b> .....	<b>vii</b>
Manual Conventions .....	vii
Contacting Tektronix .....	viii

## Getting Started

Support Package Description .....	1-1
RIO8 .....	1-1
RIO16 .....	1-1
RIO8_T .....	1-2
RIO16_T .....	1-2
Logic Analyzer Software Compatibility .....	1-3
Logic Analyzer Configuration .....	1-3
Requirements .....	1-4
Limitations of the Support .....	1-8
Connecting the Logic Analyzer to a Target System .....	1-8
Labeling P6880 Probes .....	1-9

## Operating Basics

<b>Setting Up the Support</b> .....	<b>2-1</b>
Installing the Support Software .....	2-1
Support Package Setups .....	2-2
Channel Group Definitions .....	2-2
Clocking .....	2-3
Clocking Options .....	2-3
Custom Clocking .....	2-3
Clocking State Machines (CSM) .....	2-5
<b>Acquiring and Viewing Disassembled Data</b> .....	<b>2-7</b>
Acquiring Data .....	2-7
Signal Acquisition .....	2-7
Signal Acquisition in RIO8 .....	2-7
Signal Acquisition in RIO16 .....	2-9
Viewing Disassembled Data .....	2-10
All Display Format .....	2-12
Packets & Symbols Display Format .....	2-13
Packets Only Display Format .....	2-13
Disassembled Data .....	2-14
Cycle Type Labels .....	2-15
Special Messages .....	2-17
Changing How Data is Displayed .....	2-17
Optional Display Selections .....	2-18
Bus Specific Fields .....	2-18
Viewing an Example of Disassembled Data .....	2-20

<b>Trigger Programs</b> .....	<b>2-21</b>
Installing Trigger Programs .....	2-21
Loading Trigger Programs .....	2-21
RIO8 Trigger Programs .....	2-23
RIO16 Trigger Programs .....	2-23
<b>Linking Function</b> .....	<b>2-25</b>
Forward Linking .....	2-25
Forward Linking Description .....	2-25
Backward Linking .....	2-26
Backward Linking Description .....	2-26
Linking Cycle Type Labels .....	2-27
Limitations .....	2-27
<b>Setup/Hold Time Adjustments</b> .....	<b>2-29</b>

## Reference

<b>Symbol and Channel Assignment Tables</b> .....	<b>3-1</b>
Symbol Tables .....	3-1
Channel Assignment Tables .....	3-2
RIO8 and RIO16 Channel Group Assignments .....	3-2
Setup/Hold Calibration Groups .....	3-2
Disassembly Groups for RIO8 and RIO16 Support .....	3-4
RIO8_T and RIO16_T Channel Group Assignments .....	3-7
Clock and Control Signal Channel Assignments .....	3-9
Signals not Required for Clocking and Disassembly for RIO8 and RIO16 Support .....	3-11
Signal Source To Probe Connections .....	3-12
Connections for RIO8 Support .....	3-13
Connections for RIO16 Support .....	3-17
Connections for RIO8_T Support .....	3-22
Connections for RIO16_T Support .....	3-24

## Specifications

Specification Table .....	4-1
---------------------------	-----

## Replaceable Parts List

Parts Ordering Information .....	5-1
Using the Replaceable Parts List .....	5-1

## Index

## List of Figures

<b>Figure 2-1: Bus timing diagram for the RIO8 support package . . .</b>	<b>2-8</b>
<b>Figure 2-2: Bus timing diagram for the RIO16 support package ..</b>	<b>2-10</b>
<b>Figure 2-3: Example of All display format for the RIO8 support package . . . . .</b>	<b>2-12</b>
<b>Figure 2-4: Example of All display format for the RIO16 support package . . . . .</b>	<b>2-13</b>
<b>Figure 2-5: Disassembly display options . . . . .</b>	<b>2-18</b>
<b>Figure 2-6: Loading trigger programs . . . . .</b>	<b>2-22</b>
<b>Figure 2-7: Example of the Linking Function . . . . .</b>	<b>2-28</b>

## List of Tables

<b>Table 1-1: RIO8_T channel groups</b> .....	<b>1-7</b>
<b>Table 1-2: RIO16_T channel groups</b> .....	<b>1-8</b>
<b>Table 2-1: RapidIO channel group names</b> .....	<b>2-2</b>
<b>Table 2-2: Sample points in the RIO8 support</b> .....	<b>2-9</b>
<b>Table 2-3: Sample points in the RIO16 support</b> .....	<b>2-10</b>
<b>Table 2-4: Description of special characters in the display</b> .....	<b>2-11</b>
<b>Table 2-5: Cycle type labels for RapidIO packet names</b> .....	<b>2-15</b>
<b>Table 2-6: Cycle type labels for control symbol names</b> .....	<b>2-15</b>
<b>Table 2-7: Cycle type labels for training pattern names</b> .....	<b>2-16</b>
<b>Table 2-8: Cycle type labels for packet continuation names</b> .....	<b>2-16</b>
<b>Table 2-9: Special messages and their descriptions</b> .....	<b>2-17</b>
<b>Table 2-10: Logic analyzer disassembly display options</b> .....	<b>2-18</b>
<b>Table 2-11: Linking cycle type labels and their descriptions</b> .....	<b>2-27</b>
<b>Table 3-1: Color symbol table definitions for transmit interface</b> .....	<b>3-1</b>
<b>Table 3-2: Color1 symbol table definitions for receive interface</b> .....	<b>3-1</b>
<b>Table 3-3: RIO8 Setup/Hold calibration groups</b> .....	<b>3-2</b>
<b>Table 3-4: RIO16 Setup/Hold calibration groups</b> .....	<b>3-3</b>
<b>Table 3-5: Tx_Frame group assignments</b> .....	<b>3-4</b>
<b>Table 3-6: Tx_Word group assignments</b> .....	<b>3-5</b>
<b>Table 3-7: Rx_Frame group assignments</b> .....	<b>3-6</b>
<b>Table 3-8: Rx_Word group assignments</b> .....	<b>3-6</b>
<b>Table 3-9: RIO8_T Tx_Data group assignments</b> .....	<b>3-7</b>
<b>Table 3-10: RIO8_T Rx_Data group assignments</b> .....	<b>3-8</b>
<b>Table 3-11: RIO16_T Tx_Data group assignments</b> .....	<b>3-8</b>
<b>Table 3-12: RIO16_T Rx_Data group assignments</b> .....	<b>3-9</b>
<b>Table 3-13: RIO8 clock and control signal channel assignments</b> .....	<b>3-9</b>
<b>Table 3-14: RIO16 clock and control signal channel assignments</b> .....	<b>3-10</b>
<b>Table 3-15: RIO8_T clock and control signal channel assignments</b> .....	<b>3-10</b>
<b>Table 3-16: RIO16_T clock and control signal channel assignments</b> .....	<b>3-10</b>



<b>Table 3-17: Recommended pin assignments (component side) . . . .</b>	<b>3-12</b>
<b>Table 3-18: Clock and control signals channel assignments for transmit and receive bus . . . . .</b>	<b>3-13</b>
<b>Table 3-19: Demuxed clock and control signal channel assignments for transmit and receive bus . . . . .</b>	<b>3-13</b>
<b>Table 3-20: A3 probe channel assignments for transmit bus . . . . .</b>	<b>3-13</b>
<b>Table 3-21: A2 probe channel assignments for transmit bus demuxed from A3 . . . . .</b>	<b>3-14</b>
<b>Table 3-22: D3 probe channel assignments for transmit bus demuxed from A3 . . . . .</b>	<b>3-14</b>
<b>Table 3-23: D2 probe channel assignments for transmit bus demuxed from A3 . . . . .</b>	<b>3-15</b>
<b>Table 3-24: E3 probe channel assignments for receive bus . . . . .</b>	<b>3-15</b>
<b>Table 3-25: E2 probe channel assignments for receive bus demuxed from E3 . . . . .</b>	<b>3-16</b>
<b>Table 3-26: E1 probe channel assignments for receive bus demuxed from E3 . . . . .</b>	<b>3-16</b>
<b>Table 3-27: E0 probe channel assignments for receive bus demuxed from E3 . . . . .</b>	<b>3-17</b>
<b>Table 3-28: Clock and control signals channel assignments for transmit and receive bus . . . . .</b>	<b>3-17</b>
<b>Table 3-29: A3 probe channel assignments for transmit bus . . . . .</b>	<b>3-18</b>
<b>Table 3-30: A1 probe channel assignments for receive bus . . . . .</b>	<b>3-18</b>
<b>Table 3-31: D3 probe channel assignments for transmit bus demuxed from A3 . . . . .</b>	<b>3-19</b>
<b>Table 3-32: D1 probe channel assignments for receive bus demuxed from A1 . . . . .</b>	<b>3-19</b>
<b>Table 3-33: C3 probe channel assignments for transmit bus . . . . .</b>	<b>3-20</b>
<b>Table 3-34: C1 probe channel assignments for transmit bus demuxed from C3 . . . . .</b>	<b>3-21</b>
<b>Table 3-35: E3 probe channel assignments for receive bus . . . . .</b>	<b>3-21</b>
<b>Table 3-36: E1 probe channel assignments for receive bus demuxed from E3 . . . . .</b>	<b>3-22</b>
<b>Table 3-37: Clock and control signals channel assignments for transmit and receive bus . . . . .</b>	<b>3-22</b>
<b>Table 3-38: A3 probe channel assignments for transmit bus . . . . .</b>	<b>3-23</b>
<b>Table 3-39: E3 probe channel assignments for receive bus . . . . .</b>	<b>3-24</b>
<b>Table 3-40: Clock and control signals channel assignments for transmit and receive bus . . . . .</b>	<b>3-24</b>
<b>Table 3-41: A3 probe channel assignments for transmit bus . . . . .</b>	<b>3-25</b>
<b>Table 3-42: A1 probe channel assignments for receive bus . . . . .</b>	<b>3-26</b>

<b>Table 3-43: C3 probe channel assignments for transmit bus . . . . .</b>	<b>3-26</b>
<b>Table 3-44: E3 probe channel assignments for receive bus . . . . .</b>	<b>3-27</b>
<b>Table 4-1: Electrical specifications . . . . .</b>	<b>4-1</b>

# Preface

This instruction manual contains specific information about the TMS805 RapidIO software support package and is part of a set of information on how to operate this product on compatible Tektronix logic analyzers.

If you are familiar with operating bus support packages on the logic analyzer for which the TMS805 RapidIO support was purchased, you will probably only need this instruction manual to set up and run the support.

If you are not familiar with operating bus support packages, you will need to supplement this instruction manual with information on basic operations to set up and run the support.

Information on basic operations of bus support packages is included with each product. Each logic analyzer includes basic information that describes how to perform tasks common to support packages on that platform. This information can be in the form of logic analyzer online help, an installation manual, or a user manual.

This manual provides detailed information on the following topics:

- Connecting the logic analyzer to the target system
- Setting up the logic analyzer to acquire data from the target system
- Acquiring and viewing disassembled data

## Manual Conventions

This manual uses the following conventions:

- The term “disassembler” refers to the software that disassembles bus cycles into packets and control symbols.
- The phrase “information on basic operations” refers to logic analyzer online help or a user manual, covering the basic operations of the bus support.
- The term “logic analyzer” refers to the Tektronix logic analyzer for which this product was purchased.

## Contacting Tektronix

<b>Phone</b>	1-800-833-9200*
<b>Address</b>	Tektronix, Inc. Department or name (if known) 14200 SW Karl Braun Drive P.O. Box 500 Beaverton, OR 97077 USA
<b>Web site</b>	<a href="http://www.tektronix.com">www.tektronix.com</a>
<b>Sales support</b>	1-800-833-9200, select option 1*
<b>Service support</b>	1-800-833-9200, select option 2*
<b>Technical support</b>	Email: <a href="mailto:techsupport@tektronix.com">techsupport@tektronix.com</a> 1-800-833-9200, select option 3* 6:00 a.m. - 5:00 p.m. Pacific time

---

\* **This phone number is toll free in North America. After office hours, please leave a voice mail message. Outside North America, contact a Tektronix sales office or distributor; see the Tektronix web site for a list of offices.**



# Getting Started



# Getting Started

This section contains information on the TMS805 RapidIO bus support, and information on connecting your logic analyzer to your target system.

## Support Package Description

The TMS805 bus support package acquires, decodes and displays RapidIO bus cycles. The support package allows you to acquire bus cycles with minimal impact on the normal environment of the system.

Refer to information on basic operations to determine how many modules and probes your logic analyzer needs to meet the minimum channel requirements for the TMS805 support package.

The TMS805 software contains four support packages that you can load to handle the various combinations of bus widths and data rates. A description of each support package is listed here.

---

**NOTE.** *RIO8\_CAL and RIO16\_CAL are two more support packages added for setup/hold time adjustments. Use these support packages only when you need to adjust the setup/hold time values.*

---

- RIO8** The features of the RIO8 support package are:
- Supports 8-bit RapidIO bus implementations
  - Clock rates from DC up to 375 MHz
  - Data rates from DC up to 750 Mb/s
  - Provides state, timing, triggering, and disassembly support
  - Combined transmit and receive clocking (assuming a common crystal)
  - 100% of trigger machine resources available
- RIO16** The features of the RIO16 support package are:
- Supports 16-bit RapidIO bus implementations
  - Clock rates from DC up to 375 MHz

- Data rates from DC up to 750 Mb/s
- Provides state, timing, triggering, and disassembly support
- Combined transmit and receive clocking (assuming a common crystal)
- 100% of trigger machine resources available

**RIO8\_T** The features of the RIO8\_T support package are:

- Supports 8-bit RapidIO bus implementations
- Clock rates from DC up to 500 MHz
- Data rates from DC up to 1 Gb/s
- Provides MagniVu and Analog Mux support

**RIO16\_T** The features of the RIO16\_T support package are:

- Supports 16-bit RapidIO bus implementations
- Clock rates from DC up to 500 MHz
- Data rates from DC up to 1 Gb/s
- Provides MagniVu and Analog Mux support

**MagniVu Support.** The RIO8\_T and RIO16\_T do not support state acquisition; however, you may view the data in MagniVu. MagniVu provides a waveform timing view with 125 ps between samples. MagniVu memory is 16 K samples deep. Special groups, Tx\_Data and Rx\_Data, have been created for the waveform display.

**Analog Mux Support.** Analog mux provides a way to use an external oscilloscope to view the analog features of the bus while the bus is being probed by the P6880 differential probes. For more information, refer to the information on basic operations.

**Triggering Support.** The RIO8 and RIO16 support packages contain a library of EasyTrigger programs to enable you to quickly trigger on common aspects of the RapidIO protocol.

**Disassembly Support.** The RIO8 and RIO16 support packages disassemble data acquired from the RapidIO bus. The salient features of these disassemblers are:

- Control symbol decoding and display of individual fields (physical layer)



- Packet decoding and display of individual fields for each protocol layer (physical, transport, and logical)
- Simultaneous decoding of both transmit and receive data buses
- Transaction level linking and operation level linking of request and response packets between the acquired transmit and receive buses
- Layer-level (physical, transport and logical) color highlighting in the mnemonics column
- Packet-style display using existing logic analyzer listing window architecture
- Identification and display of training patterns
- CRC computation and error detection

---

**NOTE.** Only RapidIO protocol tracking is performed. The disassembler does not attempt to perform packet payload decoding.

---

To use this support package efficiently, you need the items listed in the information on basic operations in your logic analyzer online help and the following documents for reference:

- *RapidIO™ Interconnect Specification, Rev 1.1 3/8/2001*, developed by RapidIO Trade Association.
- *RapidIO™ Interconnect Specification Part V: Globally Shared Memory Logical Specification Rev. 1.1, 3/2001*

## Logic Analyzer Software Compatibility

The label on the bus support CD-ROM states which version of logic analyzer software this support package is compatible with.

## Logic Analyzer Configuration

The TMS805 support package allows a choice of required minimum module configurations.

The support package requires one 136-channel TLA7AXX for each RapidIO port. This includes capture of both the transmit and the receive buses of the target port assuming a common clock crystal. Systems with unique clocks for the transmit and receive buses require two independent modules for simultaneous capture. Module acquisition speed depends on your requirements but is 450 MHz by default. This applies to both 8-bit and 16-bit buses.

You need four P6880 high-density differential probes to probe an entire 16-bit RapidIO port and two probes to probe an entire 8-bit RapidIO port. If you need to probe only the transmit or receive half of the port, then you need two probes for a 16-bit bus and one probe for an 8-bit bus.

## Requirements

Review the electrical specifications in the *Specifications* section in this manual as they pertain to your target system, as well as the following descriptions of TMS805 RapidIO support package requirements.

**Hardware Reset.** If a hardware reset occurs in your system during an acquisition, the application disassembler might acquire an invalid sample.

**Clock Rate.** The TMS805 RapidIO bus support package can acquire data from the RapidIO bus operating at 500 MHz<sup>1</sup> for timing only. The maximum rate for state acquisition is 375 MHz.

**Setup/Hold Time Adjustments.** The RIO8 and RIO16 support packages contain Setup/Hold calibration groups that are accessible through the custom clocking options in the setup window. The clock/data relationship of each channel can be adjusted using these calibration groups. For more information, refer to the section *Setup/Hold Time Adjustments* on page 2-29.

**Nonintrusive Acquisition.** Acquiring RapidIO bus cycles is nonintrusive to the target system. That is, the TMS805 RapidIO support package does not intercept, modify, or present signals back to the target system.

**Channel Groups.** Channel groups required for clocking and disassembly for TMS805 RapidIO bus support are as follows:

**RIO8:** The following groups are the Setup/Hold calibration groups. They are not displayed in the listing window and are listed to help you find them in the Setup/Hold adjust interface.

\$TFRAME	\$RFRAME
\$TD[0]	\$RD[0]
\$TD[1]	\$RD[1]
\$TD[2]	\$RD[2]
\$TD[3]	\$RD[3]
\$TD[4]	\$RD[4]
\$TD[5]	\$RD[5]

<sup>1</sup> **Specification at time of printing. Contact your Tektronix sales representative for current information on the fastest devices supported.**

\$TD[6]        \$RD[6]  
\$TD[7]        \$RD[7]

The following groups are required for disassembly. Only these groups are displayed in the listing window.

Tx\_Frame  
Tx\_Word  
Transmit\_Details  
Rx\_Frame  
Rx\_Word  
Receive\_Details  
Timestamp

The following trigger groups are used for triggering and are not displayed in the listing window.

Tx_Symbol	Rx_Symbol
Tx_Packet	Rx_Packet
Tx_Sbit	Rx_Sbit
Tx_AckID	Rx_AckID
Tx_Priority	Rx_Priority
Tx_Tt	Rx_Tt
Tx_Ftype	Rx_Ftype
Tx_DestID	Rx_DestID
Tx_SrcID	Rx_SrcID
Tx_Ttype	Rx_Ttype
Tx_MsgLen	Rx_MsgLen
Tx_Size	Rx_Size
Tx_Status	Rx_Status
Tx_TID	Rx_TID
Tx_Letter	Rx_Letter
Tx_Mbox	Rx_Mbox
Tx_MsgSeg	Rx_MsgSeg
Tx_HopCount	Rx_HopCount
Tx_DrBellInfo	Rx_DrBellInfo
Tx_SecDomain	Rx_SecDomain
Tx_SecID	Rx_SecID
Tx_SecTID	Rx_SecTID
Tx_Config[0:7]	Rx_Config[0:7]
Tx_Config[8:20]	Rx_Config[8:20]
Tx_A[0:15]	Rx_A[0:15]
Tx_A[16:31]	Rx_A[16:31]
Tx_A[0:31]	Rx_A[0:31]
Tx_A1[0:15]	Rx_A1[0:15]
Tx_A1[16:31]	Rx_A1[16:31]
Tx_Data[0:15]	Rx_Data[0:15]

Tx_Data[16:31]	Rx_Data[16:31]
Tx_Data[0:31]	Rx_Data[0:31]
Tx_Data[0]	Rx_Data[0]
Tx_Data[8]	Rx_Data[8]
Tx_Data[16]	Rx_Data[16]
Tx_Data[24]	Rx_Data[24]

**RI016:** The following groups are the Setup/Hold calibration groups. They are not displayed in the listing window and are listed to help you find them in the Setup/Hold adjust interface.

\$TFRAME	\$RFRAME
\$TD[0]	\$RD[0]
\$TD[1]	\$RD[1]
\$TD[2]	\$RD[2]
\$TD[3]	\$RD[3]
\$TD[4]	\$RD[4]
\$TD[5]	\$RD[5]
\$TD[6]	\$RD[6]
\$TD[7]	\$RD[7]
\$TD[8]	\$RD[8]
\$TD[9]	\$RD[9]
\$TD[10]	\$RD[10]
\$TD[11]	\$RD[11]
\$TD[12]	\$RD[12]
\$TD[13]	\$RD[13]
\$TD[14]	\$RD[14]
\$TD[15]	\$RD[15]

The following groups are required for disassembly. Only these groups are displayed in the listing window.

- Tx\_Frame
- Tx\_Word
- Transmit\_Details
- Rx\_Frame
- Rx\_Word
- Receive\_Details
- Timestamp

The following trigger groups are used for triggering and are not displayed in the listing window.

Tx_Symbol	Rx_Symbol
Tx_Packet	Rx_Packet
Tx_Sbit	Rx_Sbit
Tx_AckID	Rx_AckID
Tx_Priority	Rx_Priority
Tx_Tt	Rx_Tt

Tx_Ftype	Rx_Ftype
Tx_DestID	Rx_DestID
Tx_SrcID	Rx_SrcID
Tx_Ttype	Rx_Ttype
Tx_Msglen	Rx_Msglen
Tx_Size	Rx_Size
Tx_Status	Rx_Status
Tx_TID	Rx_TID
Tx_Letter	Rx_Letter
Tx_Mbox	Rx_Mbox
Tx_MsgSeg	Rx_MsgSeg
Tx_HopCount	Rx_HopCount
Tx_DrBellInfo	Rx_DrBellInfo
Tx_SecDomain	Rx_SecDomain
Tx_SecID	Rx_SecID
Tx_SecTID	Rx_SecTID
Tx_Config[0:7]	Rx_Config[0:7]
Tx_Config[8:20]	Rx_Config[8:20]
Tx_A[0:15]	Rx_A[0:15]
Tx_A[16:31]	Rx_A[16:31]
Tx_A[0:31]	Rx_A[0:31]
Tx_A1[0:15]	Rx_A1[0:15]
Tx_A1[16:31]	Rx_A1[16:31]
Tx_Data[0:15]	Rx_Data[0:15]
Tx_Data[16:31]	Rx_Data[16:31]
Tx_Data[0:31]	Rx_Data[0:31]
Tx_Data[0]	Rx_Data[0]
Tx_Data[16]	Rx_Data[16]

**RIO8\_T:** Table 1-1 shows the RIO8\_T groups listed in the same order on the screen.

**Table 1-1: RIO8\_T channel groups**

Group name	Display radix
Tx_Data	HEX
Rx_Data	HEX

**RIO16\_T:** Table 1-2 shows the RIO16\_T groups listed in the same order on the screen.

**Table 1-2: RIO16\_T channel groups**

Group name	Display radix
Tx_Data	HEX
Rx_Data	HEX

## Limitations of the Support

The TMS805 RapidIO support package has these limitations:

- Trigger libraries support only a 16 bit transport type (tt) field in the RapidIO protocol.
- Trigger libraries do not support extended address bits in logical packets of the RapidIO protocol.
- For combined transmit and receive capture, the transmit and receive bus clocks must be based on the same crystal. This ensures that the two clocks do not phase drift over time.
- The support package performs only RapidIO protocol tracking. The disassembler does not perform packet payload decoding. The support only identifies and displays payloads.
- The support package does not decode the first few acquired samples until and unless, the FRAME signals toggle (Tx\_Frame must toggle for the transmitter and Rx\_Frame must toggle for the receiver). Instead the message, “\*\*\* INSUFFICIENT DATA TO DISASSEMBLE \*\*\*” is displayed.
- When you start acquiring data from the middle of a packet, the packet is not decoded, until the FRAME signal toggles (Tx\_Frame must toggle for the transmitter and Rx\_Frame must toggle for the receiver). If the FRAME signal toggles indicating an embedded control symbol, this control symbol is decoded properly, but the continuation of the packet is treated as “UNKNOWN DATA”.

## Connecting the Logic Analyzer to a Target System

You can use the channel probes, clock probes, and leadsets with a commercial test clip (or adapter) to make the connections between the logic analyzer and your target system.

To connect the probes to TMS805 RapidIO signals in the target system using a test clip, follow the steps:

1. Power off your target system. It is not necessary to power off the logic analyzer.



---

**CAUTION.** *To prevent static damage, handle the target systems, probes, and the logic analyzer module in a static-free environment. Static discharge can damage these components.*

*Always wear a grounding wrist strap, heel strap, or similar device while handling the target system.*

---

2. To discharge your stored static electricity, touch the ground connector located on the back of the logic analyzer. If you are using a test clip, touch any of the ground pins on the clip to discharge stored electricity from the test clip.
3. Place the target system on a horizontal, static-free surface.
4. Use Tables 3-18 through 3-44 starting on page 3-13 to connect the channel probes to TMS805 RapidIO signal pins on the test clip or in the target system.
5. Use leadsets to connect at least one ground lead from each channel and the ground lead from each clock probe to the ground pins on your test clip.

## Labeling P6880 Probes

The TMS805 RapidIO bus support package relies on the channel mapping and labeling scheme for the P6880 Probes. Apply labels, using the instructions described in the *P6810, P6860, and P6880 Logic Analyzer Probes Instruction manual*.







# Operating Basics



# Setting Up the Support

This section provides information on how to set up the software support and covers the following topics:

- Channel group definitions
- Clocking options

The information in this section is specific to the operations and functions of the TMS805 RapidIO support package on any Tektronix logic analyzer for which the support can be purchased. Information on basic operations describes general tasks and functions.

Before you acquire and display disassembled data, you need to load the support package and specify the setups for clocking and triggering as described in the information on basic operations. The support package provides default values for each of these setups, but you can change the setups as needed.

## Installing the Support Software

To install the TMS805 RapidIO software on your Tektronix logic analyzer, follow these steps:

1. Insert the CD-ROM in the CD drive.
2. Click the Windows Start button, point to Settings, and click Control Panel.
3. In the Control Panel window, double-click Add/Remove Programs.
4. Follow the instructions on the screen for installing the software from the CD-ROM. A copy of the instruction manual is available on the CD-ROM.

To remove or uninstall software, follow the above instructions and select Uninstall. You need to close all windows before you uninstall any software.

## Support Package Setups

The software installs four support packages. Each support package offers different clocking and display options.

---

**NOTE.** *RIO8\_CAL and RIO16\_CAL are two more support packages added for setup/hold time adjustments. Use these support packages only when you need to adjust the setup/hold time values.*

---

**Acquisition Setup.** The support package consists of four different supports. You must make connections and load the appropriate package for the desired support package. The TMS805 support package affects the logic analyzer setup menus (and submenus) by modifying existing fields, and adding bus-specific fields. The four support packages you can load are:

- RIO8
- RIO16
- RIO8\_T
- RIO16\_T

The TMS805 support adds these four selections to the “Load Support Package” dialog box, under the File pulldown menu.

## Channel Group Definitions

The software automatically defines channel groups for the support package. The channel groups for the TMS805 RapidIO support for RIO8 and RIO16 supports are: Tx\_Frame, Tx\_Word, Rx\_Frame, and Rx\_Word.

**Table 2-1: RapidIO channel group names**

Group name	Display radix
Tx_Frame	BIN
Tx_Word	HEX
Rx_Frame	BIN
Rx_Word	HEX

If you want to know which signal is in which group, refer to the channel assignment tables beginning on page 3-2.

## Clocking

This section describes the clocking options and custom clocking for the TMS805 RapidIO package.

### Clocking Options

The TMS805 support package offers a bus-specific clocking mode for the TMS805 RapidIO bus interface. This clocking mode is the default selection whenever you load the particular RapidIO support package.

After loading one of the support setups, the sample points and master points are defined based on the selections of each of the clocking options.

Information on basic operations in the logic analyzer online help describes how to use these clock selections for general purpose analysis.

### Custom Clocking

A special clocking program is loaded on the module every time you load the RapidIO support package. For RIO8 and RIO16 supports, this special clocking is called Custom.

With Custom clocking, the module logs in signals from multiple channel groups at both edges of the clock. The module then sends all the logged in signals to the trigger machine and to the acquisition memory of the module for storage.

The TMS805 support package modifies the Custom Clocking Options menu of the logic analyzer.

When “Custom” is selected, the Custom Clocking Options menu has the subtitle “Clocking Options” added and displays the following clocking options for each support.

**RIO8 Custom Clocking.** The software provides four custom clocking options for RIO8 support:

- Tx and Rx (clocked by TCLK0). This option captures both transmit (Tx) and receive (Rx) buses. The transmit and receive buses are captured by the transmit clock (TCLK0). Both buses must operate at the same frequency. Setup/Hold values for data and frame signals on the Tx and Rx buses must be referenced to TCLK0. Special groups are created to assist in specifying Setup/Hold values.
- Tx and Rx (clocked by RCLK0). This option captures both transmit and receive buses. The transmit and receive buses are captured by the receive clock (RCLK0). Both buses must operate at the same frequency. Setup/Hold values for data and frame signals on the Tx and Rx buses must be referenced to RCLK0. Special groups are created to assist in specifying Setup/Hold values.

- Tx only (clocked by TCLK0). This option captures the transmit bus only. The transmit clock (TCLK0) is used to capture the bus. Setup/Hold values for data and frame must be referenced to TCLK0. Special groups are created to assist in specifying Setup/Hold values.
- Rx only (clocked by RCLK0). This option captures the receive bus only. The receive clock (RCLK0) is used to capture the bus. Setup/Hold values for data and frame must be referenced to RCLK0. Special groups are created to assist in specifying Setup/Hold values.

**RIO16 Custom Clocking.** The software provides eight custom clocking options for RIO16 support:

- Tx and Rx (clocked by TCLK0). This option captures both transmit and receive buses. The transmit and receive buses are captured by TCLK0. Both buses must operate at the same frequency. Setup/Hold values for data and frame signals on the Tx and Rx buses must be referenced to TCLK0. Special groups are created to assist in specifying Setup/Hold values.
- Tx and Rx (clocked by RCLK0). This option captures both transmit and receive buses. The transmit and receive buses are captured by the receive clock (RCLK0). Both buses must operate at the same frequency. Setup/Hold values for data and frame signals on the Tx and Rx buses must be referenced to RCLK0. Special groups are created to assist in specifying Setup/Hold values.
- Tx only (clocked by TCLK0). This option captures the transmit bus only. The transmit clock (TCLK0) is used to capture the bus. Setup/Hold values for data and frame must be referenced to TCLK0. Special groups are created to assist in specifying Setup/Hold values.
- Rx only (clocked by RCLK0). This option captures the receive bus only. The receive clock (RCLK0) is used to capture the bus. Setup/Hold values for data and frame must be referenced to RCLK0. Special groups are created to assist in specifying Setup/Hold values.
- Tx and Rx (clocked by TCLK1). This option captures both transmit and receive buses. The transmit and receive buses are captured by TCLK1. Both buses must operate at the same frequency. Setup/Hold values for data and frame signals on the Tx and Rx buses must be referenced to TCLK1. Special groups are created to assist in specifying Setup/Hold values.
- Tx and Rx (clocked by RCLK1). This option captures both transmit and receive buses. The transmit and receive buses are captured by RCLK1. Both buses must operate at the same frequency. Setup/Hold values for data and frame signals on the Tx and Rx buses must be referenced to RCLK1. Special groups are created to assist in specifying Setup/Hold values.

- Tx only (clocked by TCLK1). This option captures the transmit bus only. TCLK1 is used to capture the bus. Setup/Hold values for data and frame must be referenced to TCLK1. Special groups are created to assist in specifying Setup/Hold values.
- Rx only (clocked by RCLK1). This option captures the receive bus only. RCLK1 is used to capture the bus. Setup/Hold values for data and frame must be referenced to RCLK1. Special groups have been created to assist in specifying Setup/Hold values.

---

**NOTE.** *The first four clocking options give you the option of using an additional probe head to ease routing. The last four clocking options trade routing for minimal number of probe heads required.*

---

### **Clocking State Machines (CSM)**

RIO8 CSM. On a RapidIO bus, data is aligned to a 32-bit boundary. The acquisition module captures an 8-bit bus and performs a four-way demux to 32 bits. These 32 bits can match the RapidIO 32-bit boundary or be 50% out of phase. The RIO8 CSM ensures that the captured 32 bits match the RapidIO 32-bit boundary for both transmit and receive buses before storing the data.

RIO16 CSM. In the RIO16 support, the 32 bits of captured data (two-way demuxed from the 16-bit bus) always matches the alignment of the RapidIO 32-bit boundary. Therefore, the RIO16 CSM has only one state that stores data on every clock.





# Acquiring and Viewing Disassembled Data

This section describes how to acquire data and view it disassembled. The following information covers these topics and tasks:

- Acquiring data
- Viewing disassembled data in various display formats
- Viewing cycle type labels
- Changing the way data is displayed

## Acquiring Data

The TMS805 RapidIO software package installs four different supports: RIO8, RIO16, RIO8\_T, and RIO16\_T.

---

**NOTE.** *RIO8\_CAL and RIO16\_CAL are two more support packages added for setup/hold time adjustments. Use these support packages only when you need to adjust the setup/hold time values.*

---

Once you load the support package, choose a clocking mode, and specify the trigger, you are ready to acquire and disassemble data.

If you have any problems acquiring data, refer to information on basic operations in your logic analyzer online help or *Appendix A: Error Messages and Disassembly Problems* in the basic operations manual.

## Signal Acquisition

This section contains timing diagrams and tables that list details about how to acquire the relevant address, data, and control signals in TMS805 RapidIO support package.

### Signal Acquisition in RIO8

The TMS805 RapidIO support package takes advantage of the four-way demux feature of the logic analyzer hardware to acquire the RapidIO bus signals and create a perfectly aligned 32-bit bus word per logic analyzer sample.

When combined, the 8-bit Tx and Rx RapidIO buses contain four unique pumps of data per transaction. The bus defines a unique clock edge for each pump of data as well (two clocks with two edges each). However, the module hardware can only clock based on one of the two clock domains (the hardware cannot

synchronize two different clock domains). This support package uses TCLK0 or RCLK0 as source clock domain depending on the custom clocking options selected during combined clocking. Use RCLK0 for the Rx Only clocking option and TCLK0 for the Tx Only clocking option.

This allows the logic analyzer to detect two out of four clock edges. The other two clock edges are not used.

Since only two clock edges can be used for latching data, you must define phase offsets from TCLK0/RCLK0 to pick up the remaining two data pumps. You can do this through the setup/hold user interface. The support package provides default windows assuming 0 ps skew between the different clocks. Since the logic analyzer can detect both a rising and a falling edge, the clock period is not a variable in the offset equation.

Since the logic analyzer performs a 4x demux on the 8-bit double-pumped bus, each logic analyzer sample contains two bus clock cycles. In this case, it is possible for the bus word to be shifted by 16 bits relative to the logic analyzer sample. The CSM is used to guarantee that this case is corrected before samples are stored in memory.

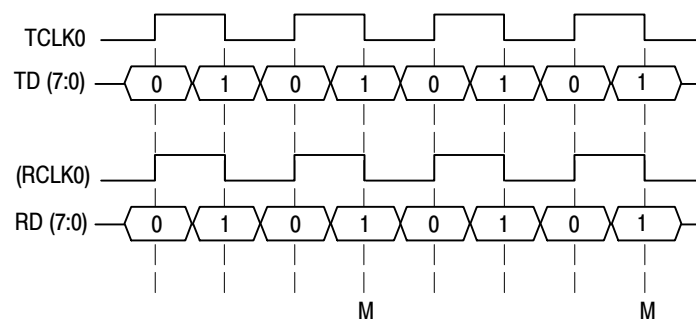
The FRAME signal must be demuxed by two to maintain alignment with its respective data bus. However, it is really only asserted on 32-bit boundaries. Again, the CSM is used to ensure that the assertion of the FRAME signal always occurs in the first bus cycle in the logic analyzer sample. The extra FRAME signal is named FRAME\_D and is meaningless outside of the CSM.

---

**NOTE.** The support package assumes that the TCLK and RCLK domains are based on the same clock crystal to eliminate clock phase drift between the two clock domains. A static skew between the clock domains is acceptable, since you can calibrate to the skew.

---

Figure 2-1 shows a bus timing diagram for the RIO8 support package.



**Figure 2-1: Bus timing diagram for the RIO8 support package**

Table 2-2 shows the sample points in the RIO8 support package.

**Table 2-2: Sample points in the RIO8 support**

Master point	Signals
M	TCLK0, TD[7:0], TFRAME, RCLK0, RD[7:0], RFRAME

## Signal Acquisition in RIO16

The TMS805 RapidIO support takes advantage of the two-way demux feature of the logic analyzer hardware to acquire the RapidIO bus and create a perfectly aligned 32-bit bus word per logic analyzer sample.

When combined, the 16-bit Tx and Rx RapidIO buses contain eight unique pumps of data per transaction. The bus defines a unique clock edge for each pump of data as well (four clocks with two edges each). However, the module hardware can only clock based on one of the four clock domains (the hardware cannot synchronize between two different clock domains). This support package uses TCLK0, TCLK1, RCLK0 or RCLK1 as source clock domain depending on the custom clocking options selected during combined clocking. Use RCLK0 or RCLK1 for the Rx Only clocking option and TCLK0 or TCLK1 for the Tx Only clocking option.

This allows the logic analyzer to detect two out of eight clock edges. The other six clock edges are not used.

Since only two clock edges can be used for latching data, you must define phase offsets from the source clock to pick up the remaining six data pumps. You can do this through the setup/hold user interface.

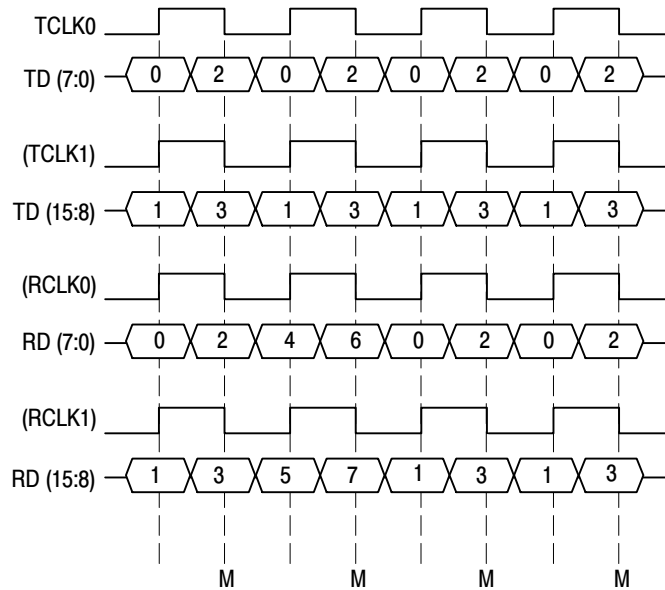
The support package provides default windows assuming 0 ps skew between the different clocks. Since the logic analyzer can detect both a rising and a falling edge, the clock period is not a variable in the offset equation.

---

**NOTE.** *The support package assumes that the TCLK and RCLK domains are based on the same clock crystal to eliminate clock phase drift between the two clock domains. A static skew between the clock domains is acceptable, since you can calibrate to the skew.*

---

Figure 2-2 shows a bus timing diagram for the RIO16 support package.



**Figure 2-2: Bus timing diagram for the RIO16 support package**

Table 2-3 shows the sample points in the RIO16 support package.

**Table 2-3: Sample points in the RIO16 support**

Master point	Signals
M	TCLK0, TD[7:0], TCLK1, TD[15:8], TFRAME, RCLK0, RD[7:0], RCLK1, RD[15:8], RFRAME

## Viewing Disassembled Data

You can view disassembled data in RIO8 and RIO16 support packages in three display formats:

- All
- Packets & Symbols
- Packets Only

The information on basic operations describes how to select the disassembly display formats.

---

**NOTE.** You must set the selections in the Disassembly property page (the Disassembly Format Definition overlay) correctly for your acquired data to be disassembled correctly. Refer to Changing How Data is Displayed on page 2-17.

---

If a channel group is not visible, you must use Add Column or Ctrl+L to make the group visible.

The disassembler displays special characters and strings in the instruction mnemonics to indicate significant events. Table 2-4 shows these special characters and strings and describes what they represent.

**Table 2-4: Description of special characters in the display**

Character or string displayed	Description
>	Insufficient room on the screen to show all available data.
h	The values of different fields of all three layers are displayed in hexadecimal. This character is suffixed with the field value.

**All Display Format**

In this option the information pertaining to all the three layers along with payload and special messages are displayed. Figure 2-3 shows an example of the All display format for the RIO8 support package.



Figure 2-3: Example of All display format for the RIO8 support package

Figure 2-4 shows an example of the All display format for the RIO16 support package.



Figure 2-4: Example of All display format for the RIO16 support package

### Packets & Symbols Display Format

The Packets & Symbols display format displays information about all packets, control symbols and special messages except the message “\*\*\* INSUFFICIENT DATA TO DISASSEMBLE \*\*\*”. For more information on special messages, refer to the section *Special Messages* on page 2-17.

### Packets Only Display Format

The Packets Only display format displays information about all packets and special messages except the message “\*\*\* INSUFFICIENT DATA TO DISASSEMBLE \*\*\*”. The display format does not display control symbols. For more information on special messages, refer to the section *Special Messages* on page 2-17.

---

**NOTE.** *The All Display Format has the highest priority followed by Packets & Symbols and Packets Only Display Formats. When Transmit and Receive buses are being simultaneously decoded and displayed, the cycle type labels and the special messages are displayed according to the display format priority.*

*The training patterns are shown in all three display formats.*

*Example: In a sample, if the support displays a packet for a transmit bus and a control symbol for a receive bus, and you choose the Packets Only option, the control symbol on the receive side continues to be displayed.*

---

## Disassembled Data

During data disassembly, the support packages RIO8 and RIO16 follow these conditions:

- If the combination of “read data size (rdsiz)” and the “word pointer (wdptr)” is reserved, then the number of payload bytes is assumed to be zero.
- If the combination of “write data size (wrsiz)” and the “word pointer (wdptr)” is reserved, then the number of payload bytes is assumed to be zero.
- For Streaming-Write packet, the TMS805 support package assumes a data payload size of 256 bytes by default.
- The “address” field is displayed as a 32-bit value. The value of the address field is displayed only when all the 29 bits of this field are acquired.
- The value of the “extended address” field is displayed only when all the 16 bits (in case of a 16-bit ext\_address field) or all the 32 bits (in case of a 32-bit ext\_address field) of that field are acquired.
- The value of the “config\_offset” field is displayed only when all the 21 bits of this field are acquired.
- The value of the “reserved” field in Maintenance Response packets is displayed only when all the 24 bits of this field are acquired.
- The value of payload data is displayed as 8 bits when the payload size is less than 8 bytes and displayed as 16-bits when the payload size is greater than 8 bytes.



## Cycle Type Labels

The TMS805 RapidIO support decodes and displays the individual fields for the Physical, Transport and Logical layers of the protocol. These fields are displayed in colors that are unique for each layer. The Physical Layer fields are displayed in green. The Transport Layer fields are displayed in red. The Logical Layer fields are displayed in blue.

The Packet Name is highlighted in green. Table 2-5 shows the cycle type labels for the packet names.

**Table 2-5: Cycle type labels for RapidIO packet names**

Cycle type labels	Description
Implementation-Defined Request Packet	Type 0 Packet Name
Intervention-Request Packet	Type 1 Packet Name
Request Packet	Type 2 Packet Name
Reserved Request Packet	Type 3 Packet Name
Reserved Request Packet	Type 4 Packet Name
Write Packet	Type 5 Packet Name
Streaming-Write Packet	Type 6 Packet Name
Reserved Request Packet	Type 7 Packet Name
Maintenance Packet	Type 8 Packet Name
Reserved Request Packet	Type 9 Packet Name
Doorbell Packet	Type 10 Packet Name
Message Packet	Type 11 Packet Name
Reserved Response Packet	Type 12 Packet Name
Response Packet	Type 13 Packet Name
Reserved Response Packet	Type 14 Packet Name
Implementation-Defined Response Packet	Type 15 Packet Name

The Control symbol name is highlighted in cyan. Table 2-6 shows the cycle type labels for the control symbol names.

**Table 2-6: Cycle type labels for control symbol names**

Cycle type labels	Description
Packet-Accepted Control	Type 0 Control Symbol Name
Packet-Retry Control	Type 1 Control Symbol Name
Packet-Not-Accepted Control	Type 2 Control Symbol Name

**Table 2-6: Cycle type labels for control symbol names (Cont.)**

Cycle type labels	Description
Reserved Control	Type 3 Control Symbol Name
Packet Control	Type 4 Control Symbol Name
Link Maintenance Request Control	Type 5 Control Symbol Name
Link Maintenance Response Control	Type 6 Control Symbol Name
Reserved Control	Type 7 Control Symbol Name

The Training Patterns are highlighted in silver. Table 2-7 shows the cycle type labels for training pattern names.

**Table 2-7: Cycle type labels for training pattern names**

Cycle type labels	Description
Training Pattern	Indicates Training Pattern

The packet continuation name is highlighted in green. Table 2-8 shows the cycle type labels for packet continuation names.

**Table 2-8: Cycle type labels for packet continuation names**

Cycle type labels	Description
Implementation-Defined Request Packet Continues	Type 0 Packet Continuation
Intervention Request Packet Continues	Type 1 Packet Continuation
Request Packet Continues	Type 2 Packet Continuation
Write Packet Continues	Type 5 Packet Continuation
Streaming-Write Packet Continues	Type 6 Packet Continuation
Maintenance Packet Continues	Type 8 Packet Continuation
Doorbell Packet Continues	Type 10 Packet Continuation
Message Packet Continues	Type 11 Packet Continuation
Response Packet Continues	Type 13 Packet Continuation
Implementation-Defined Response Packet Continues	Type 15 Packet Continuation

## Special Messages

This section gives information about the special messages used in the TMS805 software support. The disassembler uses special messages to indicate the following significant events. These messages are highlighted in yellow. Table 2-9 shows the special messages and their descriptions.

**Table 2-9: Special messages and their descriptions**

RapidIO special messages	Description
*** INSUFFICIENT DATA TO DISASSEMBLE ***	The very first few acquired samples are not decoded until and unless the FRAME signals toggle (Tx_Frame should toggle for the transmitter side and Rx_Frame should toggle for the receiver side). Instead this message will be displayed.
*** CORRUPT FIRST SYMBOL-(PARITY ERROR) ***	This message is displayed when the First Symbol of a packet fails the Parity Error Check.
*** CORRUPT SYMBOL-(PARITY ERROR) ***	This message is displayed when the first 16-bits of a Control Symbol do not match the next 16 complement bits.
*** UNKNOWN DATA ***	This message is displayed when the information present on the bus is not according to RapidIO protocol.
DATA : xxxxxxxxh (IMPLEMENTATION-DEFINED)	This message is displayed when you have more than 32 bits of type 0 and type 15 packets.
*** RESERVED DATA ***	This message is displayed when there are more than 32 bits of data for all types of reserved packets.
*** PAYLOAD TRUNCATED ***	This message is displayed whenever the “double-word” combination is not present for Type 6 (S-Write) packets.
*** CORRUPT CRC - COMPUTED CRC : xxxh ***	This message is displayed whenever a mismatch occurs between the computed CRC and the CRC present on the bus.

## Changing How Data is Displayed

Common fields and features allow you to further modify displayed data to suit your needs. You can make common and optional display selections in the Disassembly property page (the Disassembly Format Definition overlay).

You can make selections unique to the TMS805 RapidIO support to do the following tasks:

- Change how data is displayed across all display formats
- Change the interpretation of disassembled cycles

**Optional Display Selections**

Table 2-10 shows the logic analyzer disassembly display options.

**Table 2-10: Logic analyzer disassembly display options**

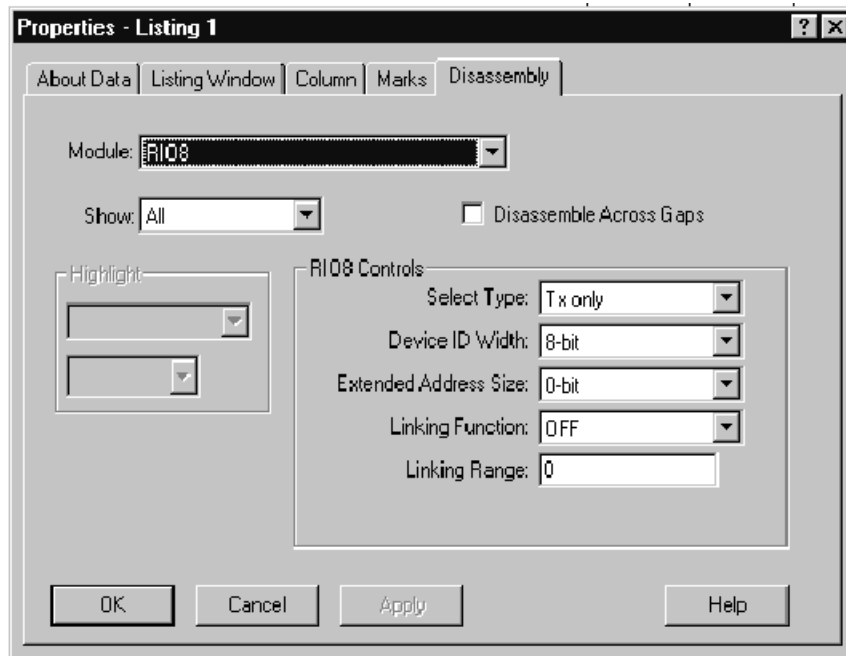
Description	Option
Show:	All (default) Packets & Symbols Packets Only
Highlight	None (default)
Disassemble Across Gaps:	Yes No (default)

**Bus Specific Fields**

You can make optional selections for disassembled data. In addition to the common selections (described in the information on basic operations), you can change the displayed data in the following ways. For the RIO8 and RIO16 supports, the submenu has the title:

- RIO8 Controls
- RIO16 Controls

Figure 2-5 shows the disassembly display options for the TMS805 RapidIO support package.



**Figure 2-5: Disassembly display options**

**Select Type.** Select the type of field for the device from one of the following:

Select Type: Tx Only (default)  
Rx Only  
Tx & Rx

**Device ID Width.** Select the field for transport type (tt) field value. Select one of the following options:

Device ID Width: 8 bit (default)  
16 bit

**Extended Address Size.** Select the size of the extended address field. Select one of the following options:

Extended Address Size: 0 bit(default)  
16 bit  
32 bit

**Linking Function.** Select Linking Function to toggle the linking function on or off.

Linking Function: OFF (default)  
ON

**Linking Range.** Enter the number of samples (a decimal value between 0 and 9999) to be linked. If you enter a value greater than 9999, then that value is replaced by 9999.

Linking Range: 0 (default)

---

**NOTE.** *The linking range specifies the number of samples from the Request Packet to the corresponding response packet or the corresponding control symbol containing the ID information. This option is also necessary for deciding the payload size. A detailed explanation is given in section Linking Function on page 2-25.*

---

## Viewing an Example of Disassembled Data

A demonstration system file (or demonstration reference memory) is provided on your CD-ROM to view an example of how the RapidIO bus cycles look when they are disassembled. Viewing this system file is not a requirement for preparing the module for use and you can view it without connecting the logic analyzer to your target system.

Information on basic operations describes how to view the file.

# Trigger Programs

This section describes how to install and load trigger programs. The RIO8 and RIO16 support packages contain a library of EasyTrigger programs to enable you to quickly trigger and qualify common aspects of the RapidIO protocol.


## Installing Trigger Programs

The trigger programs are installed along with the TMS805 RapidIO support package:

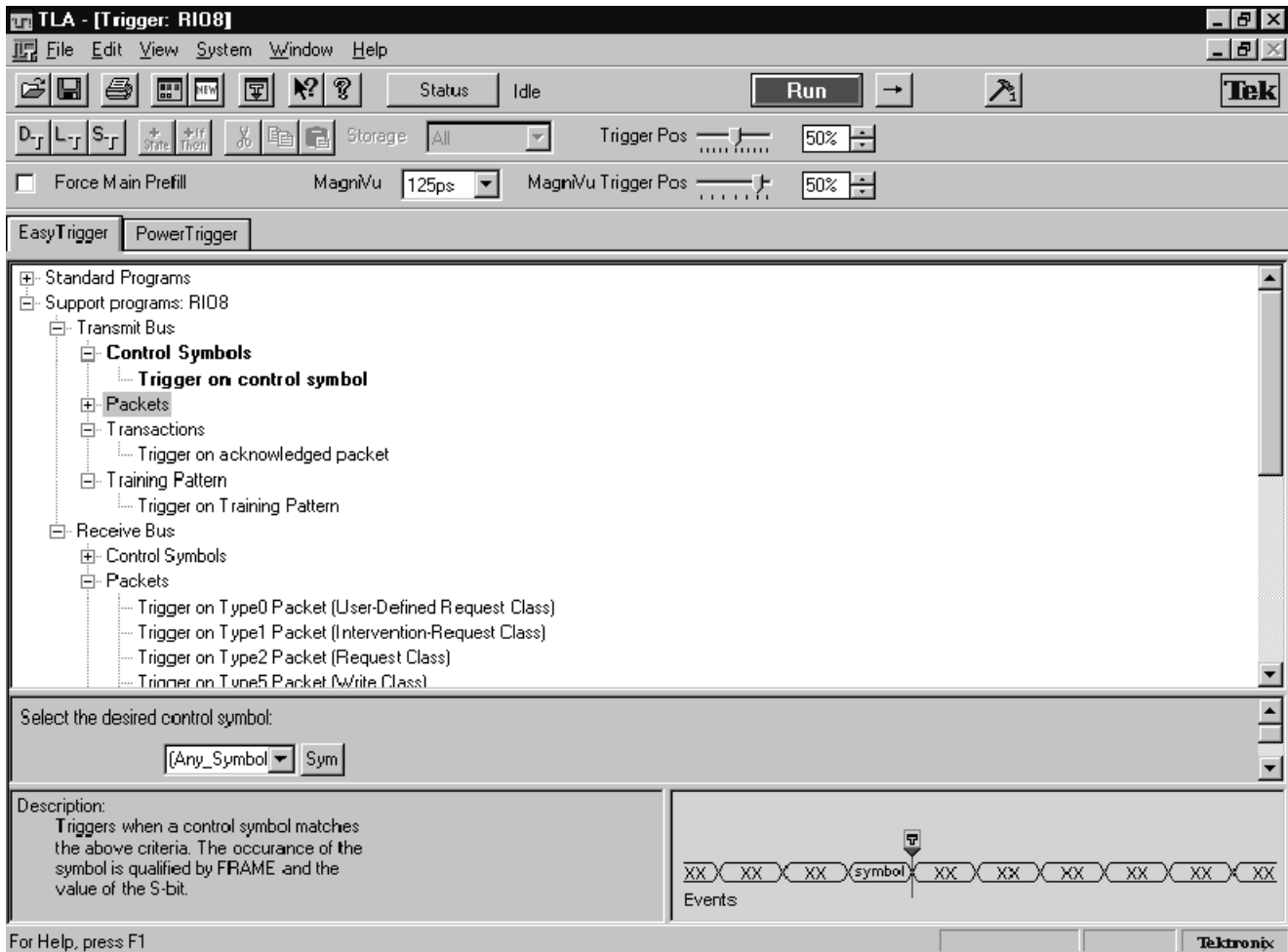
- Trigger Programs for the RIO8 support package are installed in the C:\Program Files\TLA700\Supports\RIO8\EasyTriggers folder.
- Trigger Programs for the RIO16 support package are installed in the C:\Program Files\TLA700\Supports\RIO16\EasyTriggers folder.

## Loading Trigger Programs

To load a trigger program from any of the support packages, follow these steps:

1. Load the support package.
2. From the system window, click the  Trigger button.

3. Figure 2-6 shows the window that opens.



**Figure 2-6: Loading trigger programs**

4. Scroll through the EasyTriggers to find the trigger programs that you need.
5. Select an EasyTrigger program from the list and fill in the fields.

You are now ready to trigger on the acquired data.

For more information, refer to the logic analyzer online help and the logic analyzer user manual.



**RIO8 Trigger Programs**

The following is a list of EasyTrigger programs for the RIO8 support. Each of the EasyTriggers exists for both the transmit and receive side of the bus.

- Trigger on control symbol
- Trigger on Type0 Packet (User-Defined Request Class)
- Trigger on Type1 Packet (Intervention-Request Class)
- Trigger on Type2 Packet (Request Class)
- Trigger on Type5 Packet (Write Class)
- Trigger on Type6 Packet (Streaming-Write Class)
- Trigger on Type8 Packet (Configuration Read Request)
- Trigger on Type8 Packet (Configuration Read Response)
- Trigger on Type8 Packet (Configuration Write Request)
- Trigger on Type8 Packet (Configuration Write Response)
- Trigger on Type8 Packet (Port Write Request)
- Trigger on Type10 Packet (Doorbell Class)
- Trigger on Type11 Packet (Message Class)
- Trigger on Type13 Packet (Response without payload)
- Trigger on Type13 Packet (Response with payload)
- Trigger on Type13 Packet (Message Response)
- Trigger on Type15 Packet (User-Defined Response Class)
- Trigger on acknowledged packet
- Trigger on Training Pattern

**RIO16 Trigger Programs**

The following is a list of EasyTrigger programs for the RIO16 support. Each of the EasyTriggers exists for both the transmit and receive side of the bus.

- Trigger on control symbol
- Trigger on Type0 Packet (User-Defined Request Class)
- Trigger on Type1 Packet (Intervention-Request Class)
- Trigger on Type2 Packet (Request Class)
- Trigger on Type5 Packet (Write Class)
- Trigger on Type6 Packet (Streaming-Write Class)
- Trigger on Type8 Packet (Configuration Read Request)
- Trigger on Type8 Packet (Configuration Read Response)
- Trigger on Type8 Packet (Configuration Write Request)
- Trigger on Type8 Packet (Configuration Write Response)
- Trigger on Type8 Packet (Port Write Request)
- Trigger on Type10 Packet (Doorbell Class)
- Trigger on Type11 Packet (Message Class)
- Trigger on Type13 Packet (Response without payload)
- Trigger on Type13 Packet (Response with payload)
- Trigger on Type13 Packet (Message Response)
- Trigger on Type15 Packet (User-Defined Response Class)
- Trigger on acknowledged packet
- Trigger on Training Pattern



# Linking Function

This section describes the Linking Function. The linking function provides transaction and operation level linking between the Request and the Response Packets. Transaction level linking occurs between the Request Packet and the corresponding Response Packet. Operation level linking occurs between the Request or Response Packet and the corresponding control symbol.

Linking is available only when the following disassembly options are selected and set to:

Select Type:	Tx & Rx
Linking Function:	ON
Linking Range:	values between 0-9999 (decimal)

The linking function is operational for:

- All Request Packets (except Reserved Request Packets) that have a corresponding Response Packet.
- All “Acknowledge Control Symbols” and the corresponding Request or Response Packet.
- All Request Packet (except Reserved Request Packets) in the Transmit\_Details column linking is done between the corresponding Control Symbol Response and Response Packet in the Receive\_Details column.
- All Request Packet (except Reserved Request Packets) in the Receive\_Details column linking is done between the corresponding Control Symbol Response and Response Packet in the Transmit\_Details column.

Two levels of linking — Forward Linking and Backward Linking, are performed between the Request Packets, Response Packets and intermediate Control Symbols.

## Forward Linking

This section describes Forward Linking for the TMS805 RapidIO support package.

### Forward Linking Description

Forward Linking is performed between the Request Packet and the corresponding control symbol, and also between the Request Packet and the corresponding Response Packet. If Forward Linking fails, then the linking cycle type message given in Table 2-11 on page 2-27 is displayed.

**Linking between the Request Packet and the intermediate Control Symbol.** At every Request Packet (except Reserved Request Packet), the disassembly scans a fixed number of samples (defined by the Linking Range option) forward and tries to match the ackID fields in the Request Packet and the responding Control Symbol. If a match is found, the sample number of the responding Control Symbol is placed at the Request Packet.

**Linking between the Request Packet and Response Packet.** At every Request Packet (except Reserved Request Packet), the disassembly scans a fixed number of samples (defined by the Linking Range option) forward and tries to match the srcTID field in the Request Packet and the targetTID field in the Response Packets. If a match is found, the sample number and the “status” field information of the corresponding Response Packet is placed at the Request Packet.

## Backward Linking

This section describes Backward Linking for the TMS805 RapidIO support package.

### Backward Linking Description

Backward Linking is performed between the intermediate control symbol and the Request Packet or Response Packet, and also between the Response Packet and the Request Packet. If Backward Linking fails, then the linking cycle type message given in Table 2-11 on page 2-27 is displayed.

**Linking between the intermediate Control Symbol and its Request or Response Packet.** At every Acknowledge Control Symbol, the disassembly scans a fixed number of samples (defined by the Linking Range option) backwards and tries to match the ackID fields in the Control Symbol and the Request or Response Packets. If a match is found, the sample number of the responding Request or Response Packet is placed at the Control Symbol.

**Linking between the Response Packet and the Request Packet.** At every Response Packet, the disassembly scans a fixed number of samples (defined by the Linking Range option) backwards and tries to match the targetTID field in the Response Packet and the srcTID field in the Request Packets. If a match is found, the sample number of the corresponding Request Packet is placed at the Response Packet.

## Linking Cycle Type Labels

Table 2-11 shows the linking labels and their descriptions when the Linking Function is turned on.

**Table 2-11: Linking cycle type labels and their descriptions**

Cycle type labels	Description
RESPONSE NOT FOUND	This message is displayed when any of the following conditions occur during forward linking:  A Gap was encountered when looking for a response or symbol.  The end of the acquisition was reached before finding a corresponding response or symbol.  Both packet and symbol responses were not found.  The Linking Range was entered as zero.
PACKET RESPONSE NOT FOUND	This message is displayed when the corresponding response packet is not found in the acquisition during forward linking.
CONTROL RESPONSE NOT FOUND	This message is displayed when the corresponding control symbol is not found in the acquisition during forward linking.
CORRESPONDING PACKET NOT FOUND	This message is displayed when backward linking for control symbols not successful.
REQUEST NOT FOUND	This message is displayed when backward linking for response packets is not successful.

## Limitations

The Linking Function has the following limitations:

- If the transaction field of any Request Packet, Write Packet or Maintenance Packet is “reserved” then the corresponding Response Packet is not forward linked.
- If both the Request and the Response Packets do not lie within the linking range entered in the disassembly properties window, linking is not done.

Figure 2-7 shows a display of the RIO8 reference memory when the Linking Function is switched on.

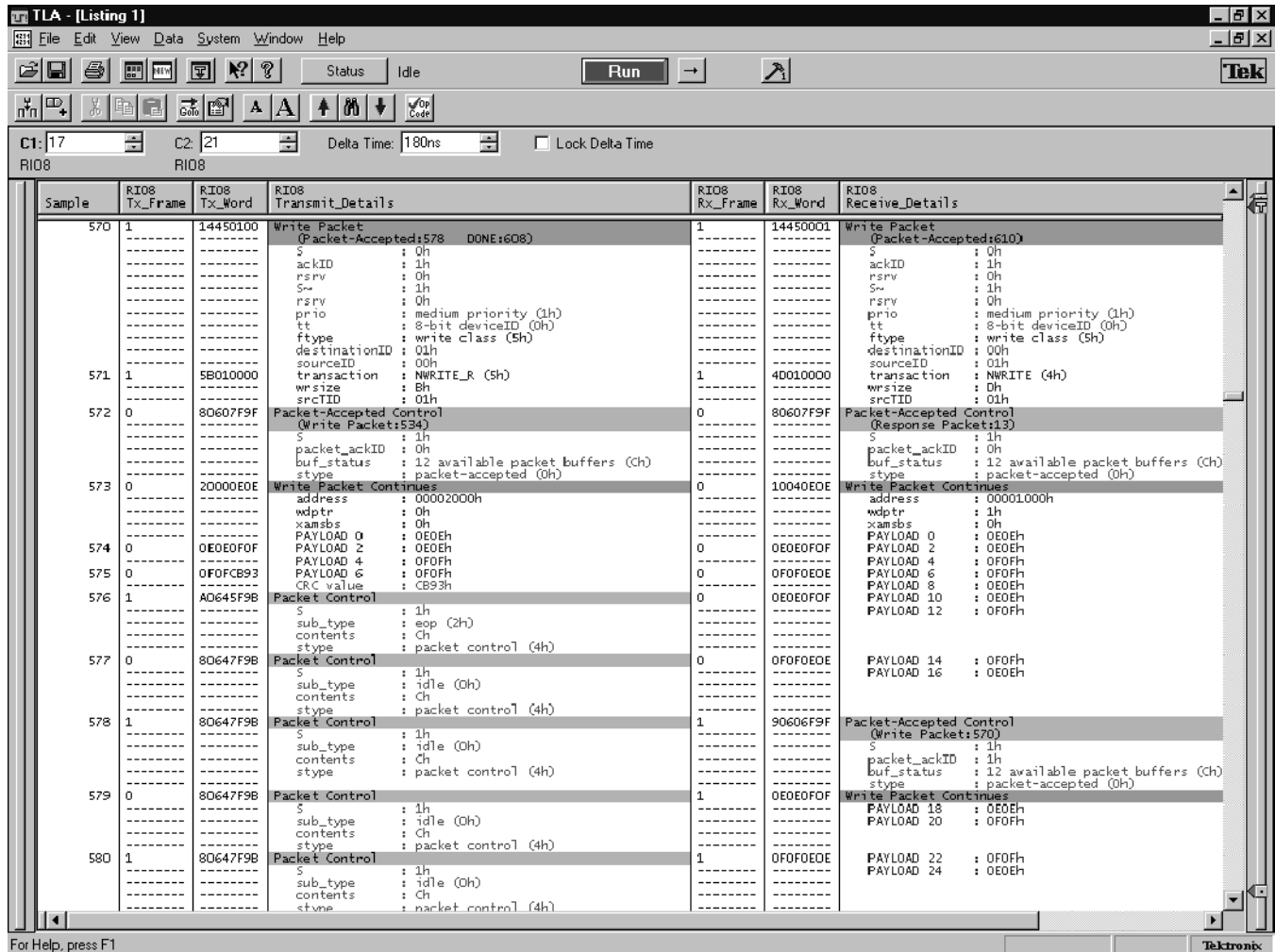


Figure 2-7: Example of the Linking Function

## Setup/Hold Time Adjustments

Most devices you test require an adjustment of the setup/hold values in the TLA700 Application. An automated setup/hold analysis application is provided to aid in the selection of the proper setup/hold values. The S/H Analyzer application (SHAnalyzer.exe) and S/H Analyzer help file (SHAnalyzer.chm) are located in the following folders:

C:\Program Files\TLA 700\Supports\RIO8\_CAL and  
C:\Program Files\TLA 700\Supports\RIO16\_CAL

To run the S/H Analyzer application on your Tektronix logic analyzer, follow these steps:

1. Click the Windows Start button and click Run.
2. Enter any one of the path names followed by “\SHAnalyzer.exe”.
3. Click OK.
4. In the SHAnalyzer application, click the Help button for detailed instructions.







# Reference



# Symbol and Channel Assignment Tables

This section lists the symbol tables and channel assignment tables for Setup/Hold calibration groups, disassembly and timing.

## Symbol Tables

The TMS805 support package supplies color symbol table files for the RIO8 and RIO16 supports.

Tables 3-1 through 3-2 show the definitions for color, bit pattern, and meaning of the group symbols in color symbol tables.

**Table 3-1: Color symbol table definitions for transmit interface**

Symbol	Binary Pattern	Description
GREEN_W	0 0 0 0 0 0	Green text with white background
RED_W	0 0 0 0 0 1	Red text with white background
BLUE_W	0 0 0 0 1 0	Blue text with white background
BLACK_L	0 0 0 0 1 1	Black text with lime background
BLACK_C	0 0 0 1 0 0	Black text with cyan background
BLACK_S	0 0 0 1 0 1	Black text with silver background
BLACK_Y	0 0 0 1 1 0	Black text with yellow background
WHITE_W	0 0 0 1 1 1	White text with white background

**Table 3-2: Color1 symbol table definitions for receive interface**

Symbol	Binary Pattern	Description
GREEN_W	0 0 0 0 0 0	Green text with white background
RED_W	0 0 0 0 0 1	Red text with white background
BLUE_W	0 0 0 0 1 0	Blue text with white background
BLACK_L	0 0 0 0 1 1	Black text with lime background
BLACK_C	0 0 0 1 0 0	Black text with cyan background
BLACK_S	0 0 0 1 0 1	Black text with silver background
BLACK_Y	0 0 0 1 1 0	Black text with yellow background
WHITE_W	0 0 0 1 1 1	White text with white background

Information on basic operations describes how to use symbolic values for triggering.

## Channel Assignment Tables

Channel assignments shown in Table 3-3 through table 3-16 use the following conventions:

- All signals are required by the support package, unless indicated otherwise.
- Channels are shown starting with the most significant bit (MSB), descending to the least significant bit (LSB).
- Channel group assignments are for all modules, unless otherwise noted.

### RIO8 and RIO16 Channel Group Assignments

Tables 3-3 through 3-8 show the channel assignments for the logic analyzer groups for the RIO8 and RIO16 support packages and the signal to which each channel connects.

### Setup/Hold Calibration Groups

Tables 3-3 through 3-4 show the Setup/Hold calibration groups for the RIO8 and RIO16 support packages.

Table 3-3 shows the RIO8 Setup/Hold calibration group assignments. An error on any of the signals in the right column requires a Setup/Hold adjustment on the calibration group in the left column.

**Table 3-3: RIO8 Setup/Hold calibration groups**

Calibration group	RIO8 support package channel name
\$TFRAME	TFRAME, TFRAME_D
\$TD[0]	TD0, TD8, TD16, TD24
\$TD[1]	TD1, TD9, TD17, TD25
\$TD[2]	TD2, TD10, TD18, TD26
\$TD[3]	TD3, TD11, TD19, TD27
\$TD[4]	TD4, TD12, TD20, TD28
\$TD[5]	TD5, TD13, TD21, TD29
\$TD[6]	TD6, TD14, TD22, TD30
\$TD[7]	TD7, TD15, TD23, TD31
\$RFRAME	RFRAME, RFRAME_D
\$RD[0]	RD0, RD8, RD16, RD24
\$RD[1]	RD1, RD9, RD17, RD25

**Table 3-3: RIO8 Setup/Hold calibration groups (Cont.)**

Calibration group	RIO8 support package channel name
\$RD[2]	RD2, RD10, RD18, RD26
\$RD[3]	RD3, RD11, RD19, RD27
\$RD[4]	RD4, RD12, RD20, RD28
\$RD[5]	RD5, RD13, RD21, RD29
\$RD[6]	RD6, RD14, RD22, RD30
\$RD[7]	RD7, RD15, RD23, RD31

Table 3-4 shows the RIO16 Setup/Hold calibration group assignments. An error on any of the signals in the right column requires a Setup/Hold adjustment on the calibration group in the left column.

**Table 3-4: RIO16 Setup/Hold calibration groups**

Calibration group	RIO16 support package channel name
\$TFRAME	TFRAME
\$TD[0]	TD0, TD16
\$TD[1]	TD1, TD17
\$TD[2]	TD2, TD18
\$TD[3]	TD3, TD19
\$TD[4]	TD4, TD20
\$TD[5]	TD5, TD21
\$TD[6]	TD6, TD22
\$TD[7]	TD7, TD23
\$TD[8]	TD8, TD24
\$TD[9]	TD9, TD25
\$TD[10]	TD10, TD26
\$TD[11]	TD11, TD27
\$TD[12]	TD12, TD28
\$TD[13]	TD13, TD29
\$TD[14]	TD14, TD30
\$TD[15]	TD15, TD31
\$RFRAME	RFRAME
\$RD[0]	RD0, RD16
\$RD[1]	RD1, RD17

**Table 3-4: RIO16 Setup/Hold calibration groups (Cont.)**

Calibration group	RIO16 support package channel name
\$RD[2]	RD2, RD18
\$RD[3]	RD3, RD19
\$RD[4]	RD4, RD20
\$RD[5]	RD5, RD21
\$RD[6]	RD6, RD22
\$RD[7]	RD7, RD23
\$RD[8]	RD8, RD24
\$RD[9]	RD9, RD25
\$RD[10]	RD10, RD26
\$RD[11]	RD11, RD27
\$RD[12]	RD12, RD28
\$RD[13]	RD13, RD29
\$RD[14]	RD14, RD30
\$RD[15]	RD15, RD31

**Disassembly Groups for RIO8 and RIO16 Support**

Tables 3-5 through 3-8 show the disassembly groups for the TMS805 support that are common across RIO8 and RIO16 support packages.

Table 3-5 shows the channel assignments for the Tx\_Frame group and the signal to which each channel connects. By default, this channel group is displayed in binary.

**Table 3-5: Tx\_Frame group assignments**

Bit order	RapidIO support package channel name
0	TFRAME

Table 3-6 shows the channel assignments for the Tx\_Word group and the signal to which each channel connects. By default, this channel group is displayed in hexadecimal.

**Table 3-6: Tx\_Word group assignments**

Bit order	RapidIO support package channel name
31 (MSB)	TD0
30	TD1
29	TD2
28	TD3
27	TD4
26	TD5
25	TD6
24	TD7
23	TD8
22	TD9
21	TD10
20	TD11
19	TD12
18	TD13
17	TD14
16	TD15
15	TD16
14	TD17
13	TD18
12	TD19
11	TD20
10	TD21
9	TD22
8	TD23
7	TD24
6	TD25
5	TD26
4	TD27
3	TD28
2	TD29

**Table 3-6: Tx\_Word group assignments (Cont.)**

Bit order	RapidIO support package channel name
1	TD30
0 (LSB)	TD31

Table 3-7 shows the channel assignments for the Rx\_Frame group and the signal to which each channel connects. By default, this channel group is displayed in binary.

**Table 3-7: Rx\_Frame group assignments**

Bit order	RapidIO support package channel name
0	RFRAME

Table 3-8 shows the channel assignments for the Rx\_Word group and the signal to which each channel connects. By default, this channel group is displayed in hexadecimal.

**Table 3-8: Rx\_Word group assignments**

Bit order	RapidIO support package channel name
31 (MSB)	RD0
30	RD1
29	RD2
28	RD3
27	RD4
26	RD5
25	RD6
24	RD7
23	RD8
22	RD9
21	RD10
20	RD11
19	RD12
18	RD13
17	RD14



**Table 3-8: Rx\_Word group assignments (Cont.)**

Bit order	RapidIO support package channel name
16	RD15
15	RD16
14	RD17
13	RD18
12	RD19
11	RD20
10	RD21
9	RD22
8	RD23
7	RD24
6	RD25
5	RD26
4	RD27
3	RD28
2	RD29
1	RD30
0 (LSB)	RD31

### **RIO8\_T and RIO16\_T Channel Group Assignments**

Tables 3-9 through 3-12 show the channel assignments for the groups of the RIO8\_T and RIO16\_T support packages and the signal to which each channel connects.

**Table 3-9: RIO8\_T Tx\_Data group assignments**

Bit order	RIO8_T support package channel name
7 (MSB)	TD0
6	TD1
5	TD2
4	TD3
3	TD4
2	TD5
1	TD6
0 (LSB)	TD7

**Table 3-10: RIO8\_T Rx\_Data group assignments**

Bit order	RIO8_T support package channel name
7 (MSB)	RD0
6	RD1
5	RD2
4	RD3
3	RD4
2	RD5
1	RD6
0 (LSB)	RD7

Tables 3-11 through 3-12 show the channel assignments for the groups of the RIO16\_T support package and the signal to which each channel connects.

**Table 3-11: RIO16\_T Tx\_Data group assignments**

Bit order	RIO16_T support package channel name
15 (MSB)	TD0
14	TD1
13	TD2
12	TD3
11	TD4
10	TD5
9	TD6
8	TD7
7	TD8
6	TD9
5	TD10
4	TD11
3	TD12
2	TD13
1	TD14
0 (LSB)	TD15

**Table 3-12: RIO16\_T Rx\_Data group assignments**

Bit order	RIO16_T support package channel name
15 (MSB)	RD0
14	RD1
13	RD2
12	RD3
11	RD4
10	RD5
9	RD6
8	RD7
7	RD8
6	RD9
5	RD10
4	RD11
3	RD12
2	RD13
1	RD14
0 (LSB)	RD15

### Clock and Control Signal Channel Assignments

Tables 3-13 through 3-16 show the channel assignments for the clock and qualifier probes, and the signal to which each channel connects.

**Table 3-13: RIO8 clock and control signal channel assignments**

Logic analyzer clock/qualifer channel	RapidIO support package channel name
CK0	TFRAME
CK1	TCLK0_D
CK2	RFRAME_D
CK3	RCLK0_D
Q0	TCLK0
Q1	TFRAME_D
Q2	RCLK0
Q3	RFRAME

**Table 3- 14: RIO16 clock and control signal channel assignments**

Logic analyzer clock/qualifier channel	RapidIO support package channel name
CK0	TFRAME
CK1	RCLK1
CK2	NOT CONNECTED
CK3	TCLK1
Q0	TCLK0
Q1	NOT CONNECTED
Q2	RCLK0
Q3	RFRAME

**Table 3- 15: RIO8\_T clock and control signal channel assignments**

Logic analyzer clock/qualifier channel	RapidIO support package channel name
CK0	TFRAME
CK1	NOT CONNECTED
CK2	NOT CONNECTED
CK3	NOT CONNECTED
Q0	TCLK0
Q1	NOT CONNECTED
Q2	RCLK0
Q3	RFRAME

**Table 3- 16: RIO16\_T clock and control signal channel assignments**

Logic analyzer clock/qualifier channel	RapidIO support package channel name
CK0	TFRAME
CK1	RCLK1
CK2	NOT CONNECTED
CK3	TCLK1
Q0	TCLK0

**Table 3-16: RIO16\_T clock and control signal channel assignments (Cont.)**

Logic analyzer clock/qualifier channel	RapidIO support package channel name
Q1	NOT CONNECTED
Q2	RCLK0
Q3	RFRAME

**Signals not Required for Clocking and Disassembly for RIO8 and RIO16 Support**

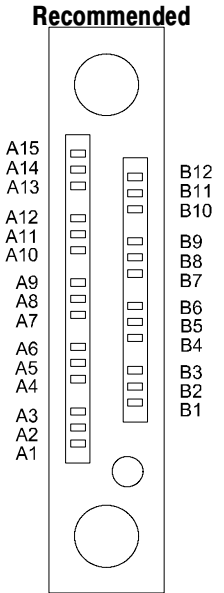
At least one among TCLK0, TCLK1, RCLK0, or RCLK1 clock signals must be acquired. The remaining one or three clocks (depending on the RIO8 or RIO16 support packages) are optional. When only a transmit or receive bus is acquired, all frame and data channels on the other bus are also optional.

## Signal Source To Probe Connections

For design purposes, you may need to make connections between the Signal Source and the P6880 Logic Analyzer Probe. Refer to the *P6810, P6860, and P6880 Logic Analyzer Probes Instruction* manual, Tektronix part number 071-1059-XX, for more information on mechanical specifications. Tables 3-18 through 3-44 show the Signal Source to P6880 pin connections.

The recommended pin assignment is the P6880 pin assignment. See Table 3-17.

**Table 3-17: Recommended pin assignments (component side)**

Type of pin assignment	Comments
<p style="text-align: center;"><b>Recommended</b></p>  <p style="text-align: center;"><b>P6880 Pin Assignment</b></p>	<p>Recommended. This pin assignment is what we recommend that you use.</p>

**Connections for RIO8 Support** Tables 3-18 through 3-27 show the pin connections for the RIO8 support.

**Table 3-18: Clock and control signals channel assignments for transmit and receive bus**

Logic analyzer acquisition channel	RapidIO support package channel name	P6880 pad name	P6880 probe channel name	RapidIO bus signal name
CK0	TFRAME	A13	CK0+	TFRAME+
		A15	CK0-	TFRAME-
Q0	TCLK0	A13	Q0+	TCLK0+
		A15	Q0-	TCLK0-
Q2	RCLK0	A13	Q2+	RCLK0+
		A15	Q2-	RCLK0-
Q3	RFRAME	A13	Q3+	RFRAME+
		A15	Q3-	RFRAME-

**Table 3-19: Demuxed clock and control signal channel assignments for transmit and receive bus**

Logic analyzer clock signal	RapidIO support package channel name
CK1	TCLK0_D
CK2	RFRAME_D
CK3	RCLK0_D
Q1	TFRAME_D

**Table 3-20: A3 probe channel assignments for transmit bus**

Logic analyzer acquisition channel	RapidIO support package channel name	P6880 pad name	P6880 probe channel name	RapidIO bus signal name
A3(7)	TD7	B12	A3:7+	TD7-
		B10	A3:7-	TD7+
A3(6)	TD6	A10	A3:6+	TD6+
		A12	A3:6-	TD6-
A3(5)	TD5	B9	A3:5+	TD5-
		B7	A3:5-	TD5+
A3(4)	TD4	A7	A3:4+	TD4+

**Table 3-20: A3 probe channel assignments for transmit bus (Cont.)**

Logic analyzer acquisition channel	RapidIO support package channel name	P6880 pad name	P6880 probe channel name	RapidIO bus signal name
		A9	A3:4-	TD4-
A3(3)	TD3	B6	A3:3+	TD3-
		B4	A3:3-	TD3+
A3(2)	TD2	A4	A3:2+	TD2+
		A6	A3:2-	TD2-
A3(1)	TD1	B3	A3:1+	TD1-
		B1	A3:1-	TD1+
A3(0)	TD0	A1	A3:0+	TD0+
		A3	A3:0-	TD0-

**Table 3-21: A2 probe channel assignments for transmit bus demuxed from A3**

Logic analyzer clock signal	RapidIO support package channel name
A2(7)	TD23
A2(6)	TD22
A2(5)	TD21
A2(4)	TD20
A2(3)	TD19
A2(2)	TD18
A2(1)	TD17
A2(0)	TD16

**Table 3-22: D3 probe channel assignments for transmit bus demuxed from A3**

Logic analyzer clock signal	RapidIO support package channel name
D3(7)	TD15
D3(6)	TD14
D3(5)	TD13
D3(4)	TD12
D3(3)	TD11



**Table 3-22: D3 probe channel assignments for transmit bus demuxed from A3 (Cont.)**

Logic analyzer clock signal	RapidIO support package channel name
D3(2)	TD10
D3(1)	TD9
D3(0)	TD8

**Table 3-23: D2 probe channel assignments for transmit bus demuxed from A3**

Logic analyzer clock signal	RapidIO support package channel name
D2(7)	TD31
D2(6)	TD30
D2(5)	TD29
D2(4)	TD28
D2(3)	TD27
D2(2)	TD26
D2(1)	TD25
D2(0)	TD24

**Table 3-24: E3 probe channel assignments for receive bus**

Logic analyzer acquisition channel	RapidIO support package channel name	P6880 pad name	P6880 probe channel name	RapidIO bus signal name
E3(7)	RD7	B12	E3:7+	RD7-
		B10	E3:7-	RD7+
E3(6)	RD6	A10	E3:6+	RD6+
		A12	E3:6-	RD6-
E3(5)	RD5	B9	E3:5+	RD5-
		B7	E3:5-	RD5+
E3(4)	RD4	A7	E3:4+	RD4+
		A9	E3:4-	RD4-
E3(3)	RD3	B6	E3:3+	RD3-
		B4	E3:3-	RD3+
E3(2)	RD2	A4	E3:2+	RD2+

**Table 3-24: E3 probe channel assignments for receive bus (Cont.)**

Logic analyzer acquisition channel	RapidIO support package channel name	P6880 pad name	P6880 probe channel name	RapidIO bus signal name
		A6	E3:2-	RD2-
E3(1)	RD1	B3	E3:1+	RD1-
		B1	E3:1-	RD1+
E3(0)	RD0	A1	E3:0+	RD0+
		A3	E3:0-	RD0-

**Table 3-25: E2 probe channel assignments for receive bus demuxed from E3**

Logic analyzer clock signal	RapidIO support package channel name
E2(7)	RD23
E2(6)	RD22
E2(5)	RD21
E2(4)	RD20
E2(3)	RD19
E2(2)	RD18
E2(1)	RD17
E2(0)	RD16

**Table 3-26: E1 probe channel assignments for receive bus demuxed from E3**

Logic analyzer clock signal	RapidIO support package channel name
E1(7)	RD15
E1(6)	RD14
E1(5)	RD13
E1(4)	RD12
E1(3)	RD11
E1(2)	RD10
E1(1)	RD9
E1(0)	RD8

**Table 3-27: E0 probe channel assignments for receive bus demuxed from E3**

Logic analyzer clock signal	RapidIO support package channel name
E0(7)	RD31
E0(6)	RD30
E0(5)	RD29
E0(4)	RD28
E0(3)	RD27
E0(2)	RD26
E0(1)	RD25
E0(0)	RD24

**P6880 probe channels not connected.** A0, A1, C0, C1, C2, C3, D0, and D1 probe channels are not connected and not used.

### Connections for RIO16 Support

Tables 3-28 through 3-36 show the pin connections for the RIO16 support.

**Table 3-28: Clock and control signals channel assignments for transmit and receive bus**

Logic analyzer acquisition channel	RapidIO support package channel name	P6880 pad name	P6880 probe channel name	RapidIO bus signal name
CK0	TFRAME	A13	CK0+	TFRAME+
		A15	CK0-	TFRAME-
CK1	RCLK1	A13	CK1+	RCLK1+
		A15	CK1-	RCLK1-
CK2	NOT CONNECTED	A13	CK2+	NOT CONNECTED
		A15	CK2-	NOT CONNECTED
CK3	TCLK1	A13	CK3+	TCLK1+
		A15	CK3-	TCLK1-
Q0	TCLK0	A13	Q0+	TCLK0+
		A15	Q0-	TCLK0-
Q1	NOT CONNECTED	A13	Q1+	NOT CONNECTED
		A15	Q1-	NOT CONNECTED
Q2	RCLK0	A13	Q2+	RCLK0+
		A15	Q2-	RCLK0-

**Table 3-28: Clock and control signals channel assignments for transmit and receive bus (Cont.)**

Logic analyzer acquisition channel	RapidIO support package channel name	P6880 pad name	P6880 probe channel name	RapidIO bus signal name
Q3	RFRAME	A13	Q3+	RFRAME+
		A15	Q3-	RFRAME-

**Table 3-29: A3 probe channel assignments for transmit bus**

Logic analyzer acquisition channel	RapidIO support package channel name	P6880 pad name	P6880 probe channel name	RapidIO bus signal name
A3(7)	TD7	B12	A3:7+	TD7-
		B10	A3:7-	TD7+
A3(6)	TD6	A10	A3:6+	TD6+
		A12	A3:6-	TD6-
A3(5)	TD5	B9	A3:5+	TD5-
		B7	A3:5-	TD5+
A3(4)	TD4	A7	A3:4+	TD4+
		A9	A3:4-	TD4-
A3(3)	TD3	B6	A3:3+	TD3-
		B4	A3:3-	TD3+
A3(2)	TD2	A4	A3:2+	TD2+
		A6	A3:2-	TD2-
A3(1)	TD1	B3	A3:1+	TD1-
		B1	A3:1-	TD1+
A3(0)	TD0	A1	A3:0+	TD0+
		A3	A3:0-	TD0-

**Table 3-30: A1 probe channel assignments for receive bus**

Logic analyzer acquisition channel	RapidIO support package channel name	P6880 pad name	P6880 probe channel name	RapidIO bus signal name
A1(7)	RD15	B12	A1:7+	RD15-
		B10	A1:7-	RD15+
A1(6)	RD14	A10	A1:6+	RD14+
		A12	A1:6-	RD14-
A1(5)	RD13	B9	A1:5+	RD13-

**Table 3-30: A1 probe channel assignments for receive bus (Cont.)**

Logic analyzer acquisition channel	RapidIO support package channel name	P6880 pad name	P6880 probe channel name	RapidIO bus signal name
		B7	A1:5-	RD13+
A1(4)	RD12	A7	A1:4+	RD12+
		A9	A1:4-	RD12-
A1(3)	RD11	B6	A1:3+	RD11-
		B4	A1:3-	RD11+
A1(2)	RD10	A4	A1:2+	RD10+
		A6	A1:2-	RD10-
A1(1)	RD9	B3	A1:1+	RD9-
		B1	A1:1-	RD9+
A1(0)	RD8	A1	A1:0+	RD8+
		A3	A1:0-	RD8-

**Table 3-31: D3 probe channel assignments for transmit bus demuxed from A3**

Logic analyzer clock signal	RapidIO support package channel name
D3(7)	TD23
D3(6)	TD22
D3(5)	TD21
D3(4)	TD20
D3(3)	TD19
D3(2)	TD18
D3(1)	TD17
D3(0)	TD16

**Table 3-32: D1 probe channel assignments for receive bus demuxed from A1**

Logic analyzer clock signal	RapidIO support package channel name
D1(7)	RD31
D1(6)	RD30
D1(5)	RD29

**Table 3-32: D1 probe channel assignments for receive bus demuxed from A1 (Cont.)**

Logic analyzer clock signal	RapidIO support package channel name
D1(4)	RD28
D1(3)	RD27
D1(2)	RD26
D1(1)	RD25
D1(0)	RD24

**Table 3-33: C3 probe channel assignments for transmit bus**

Logic analyzer acquisition channel	RapidIO support package channel name	P6880 pad name	P6880 probe channel name	RapidIO bus signal name
C3(7)	TD15	B12	C3:7+	TD15-
		B10	C3:7-	TD15+
C3(6)	TD14	A10	C3:6+	TD14+
		A12	C3:6-	TD14-
C3(5)	TD13	B9	C3:5+	TD13-
		B7	C3:5-	TD13+
C3(4)	TD12	A7	C3:4+	TD12+
		A9	C3:4-	TD12-
C3(3)	TD11	B6	C3:3+	TD11-
		B4	C3:3-	TD11+
C3(2)	TD10	A4	C3:2+	TD10+
		A6	C3:2-	TD10-
C3(1)	TD9	B3	C3:1+	TD9-
		B1	C3:1-	TD9+

**Table 3-33: C3 probe channel assignments for transmit bus (Cont.)**

Logic analyzer acquisition channel	RapidIO support package channel name	P6880 pad name	P6880 probe channel name	RapidIO bus signal name
C3(0)	TD8	A1	C3:0+	TD8+
		A3	C3:0-	TD8-

**Table 3-34: C1 probe channel assignments for transmit bus demuxed from C3**

Logic analyzer clock signal	RapidIO support package channel name
C1(7)	TD31
C1(6)	TD30
C1(5)	TD29
C1(4)	TD28
C1(3)	TD27
C1(2)	TD26
C1(1)	TD25
C1(0)	TD24

**Table 3-35: E3 probe channel assignments for receive bus**

Logic analyzer acquisition channel	RapidIO support package channel name	P6880 pad name	P6880 probe channel name	RapidIO bus signal name
E3(7)	RD7	B12	E3:7+	RD7-
		B10	E3:7-	RD7+
E3(6)	RD6	A10	E3:6+	RD6+
		A12	E3:6-	RD6-
E3(5)	RD5	B9	E3:5+	RD5-
		B7	E3:5-	RD5+
E3(4)	RD4	A7	E3:4+	RD4+
		A9	E3:4-	RD4-
E3(3)	RD3	B6	E3:3+	RD3-
		B4	E3:3-	RD3+
E3(2)	RD2	A4	E3:2+	RD2+
		A6	E3:2-	RD2-
E3(1)	RD1	B3	E3:1+	RD1-

**Table 3-35: E3 probe channel assignments for receive bus (Cont.)**

Logic analyzer acquisition channel	RapidIO support package channel name	P6880 pad name	P6880 probe channel name	RapidIO bus signal name
		B1	E3:1-	RD1+
E3(0)	RD0	A1	E3:0+	RD0+
		A3	E3:0-	RD0-

**Table 3-36: E1 probe channel assignments for receive bus demuxed from E3**

Logic analyzer clock signal	RapidIO support package channel name
E1(7)	RD23
E1(6)	RD22
E1(5)	RD21
E1(4)	RD20
E1(3)	RD19
E1(2)	RD18
E1(1)	RD17
E1(0)	RD16

**P6880 probe channels not connected.** A0, A2, C0, C2, D0, D2, E0, and E2 probe channels are not connected and not used.

**Connections for RIO8\_T Support**

Tables 3-37 through 3-39 show the pin connections for the RIO8\_T support.

**Table 3-37: Clock and control signals channel assignments for transmit and receive bus**

Logic analyzer acquisition channel	RapidIO support package channel name	P6880 pad name	P6880 probe channel name	RapidIO bus signal name
CK0	TFRAME	A13	CK0+	TFRAME+
		A15	CK0-	TFRAME-
CK1	NOT CONNECTED	A13	CK1+	NOT CONNECTED
		A15	CK1-	NOT CONNECTED
CK2	NOT CONNECTED	A13	CK2+	NOT CONNECTED
		A15	CK2-	NOT CONNECTED



**Table 3-37: Clock and control signals channel assignments for transmit and receive bus (Cont.)**

Logic analyzer acquisition channel	RapidIO support package channel name	P6880 pad name	P6880 probe channel name	RapidIO bus signal name
CK3	NOT CONNECTED	A13	CK3+	NOT CONNECTED
		A15	CK3-	NOT CONNECTED
Q0	TCLK0	A13	Q0+	TCLK0+
		A15	Q0-	TCLK0-
Q1	NOT CONNECTED	A13	Q1+	NOT CONNECTED
		A15	Q1-	NOT CONNECTED
Q2	RCLK0	A13	Q2+	RCLK0+
		A15	Q2-	RCLK0-
Q3	RFRAME	A13	Q3+	RFRAME+
		A15	Q3-	RFRAME-

**Table 3-38: A3 probe channel assignments for transmit bus**

Logic analyzer acquisition channel	RapidIO support package channel name	P6880 pad name	P6880 probe channel name	RapidIO bus signal name
A3(7)	TD7	B12	A3:7+	TD7-
		B10	A3:7-	TD7+
A3(6)	TD6	A10	A3:6+	TD6+
		A12	A3:6-	TD6-
A3(5)	TD5	B9	A3:5+	TD5-
		B7	A3:5-	TD5+
A3(4)	TD4	A7	A3:4+	TD4+
		A9	A3:4-	TD4-
A3(3)	TD3	B6	A3:3+	TD3-
		B4	A3:3-	TD3+
A3(2)	TD2	A4	A3:2+	TD2+
		A6	A3:2-	TD2-
A3(1)	TD1	B3	A3:1+	TD1-
		B1	A3:1-	TD1+
A3(0)	TD0	A1	A3:0+	TD0+
		A3	A3:0-	TD0-

**Table 3-39: E3 probe channel assignments for receive bus**

Logic analyzer acquisition channel	RapidIO support package channel name	P6880 pad name	P6880 probe channel name	RapidIO bus signal name
E3(7)	RD7	B12	E3:7+	RD7-
		B10	E3:7-	RD7+
E3(6)	RD6	A10	E3:6+	RD6+
		A12	E3:6-	RD6-
E3(5)	RD5	B9	E3:5+	RD5-
		B7	E3:5-	RD5+
E3(4)	RD4	A7	E3:4+	RD4+
		A9	E3:4-	RD4-
E3(3)	RD3	B6	E3:3+	RD3-
		B4	E3:3-	RD3+
E3(2)	RD2	A4	E3:2+	RD2+
		A6	E3:2-	RD2-
E3(1)	RD1	B3	E3:1+	RD1-
		B1	E3:1-	RD1+
E3(0)	RD0	A1	E3:0+	RD0+
		A3	E3:0-	RD0-

**P6880 probe channels not connected.** A0, A1, A2, C0, C1, C2, C3, D0, D1, D2, D3, E0, E1, and E2 probe channels are not connected and not used.

### Connections for RIO16\_T Support

Tables 3-40 through 3-44 show the pin connections for the RIO16\_T support.

**Table 3-40: Clock and control signals channel assignments for transmit and receive bus**

Logic analyzer acquisition channel	RapidIO support package channel name	P6880 pad name	P6880 probe channel name	RapidIO bus signal name
CK0	TFRAME	A13	CK0+	TFRAME+
		A15	CK0-	TFRAME-
CK1	RCLK1	A13	CK1+	RCLK1+
		A15	CK1-	RCLK1-
CK2	NOT CONNECTED	A13	CK2+	NOT CONNECTED
		A15	CK2-	NOT CONNECTED
CK3	TCLK1	A13	CK3+	TCLK1+

**Table 3-40: Clock and control signals channel assignments for transmit and receive bus (Cont.)**

Logic analyzer acquisition channel	RapidIO support package channel name	P6880 pad name	P6880 probe channel name	RapidIO bus signal name
		A15	CK3-	TCLK1-
Q0	TCLK0	A13	Q0+	TCLK0+
		A15	Q0-	TCLK0-
Q1	NOT CONNECTED	A13	Q1+	NOT CONNECTED
		A15	Q1-	NOT CONNECTED
Q2	RCLK0	A13	Q2+	RCLK0+
		A15	Q2-	RCLK0-
Q3	RFRAME	A13	Q3+	RFRAME+
		A15	Q3-	RFRAME-

**Table 3-41: A3 probe channel assignments for transmit bus**

Logic analyzer acquisition channel	RapidIO support package channel name	P6880 pad name	P6880 probe channel name	RapidIO bus signal name
A3(7)	TD7	B12	A3:7+	TD7-
		B10	A3:7-	TD7+
A3(6)	TD6	A10	A3:6+	TD6+
		A12	A3:6-	TD6-
A3(5)	TD5	B9	A3:5+	TD5-
		B7	A3:5-	TD5+
A3(4)	TD4	A7	A3:4+	TD4+
		A9	A3:4-	TD4-
A3(3)	TD3	B6	A3:3+	TD3-
		B4	A3:3-	TD3+
A3(2)	TD2	A4	A3:2+	TD2+
		A6	A3:2-	TD2-
A3(1)	TD1	B3	A3:1+	TD1-
		B1	A3:1-	TD1+
A3(0)	TD0	A1	A3:0+	TD0+
		A3	A3:0-	TD0-

**Table 3-42: A1 probe channel assignments for receive bus**

Logic analyzer acquisition channel	RapidIO support package channel name	P6880 pad name	P6880 probe channel name	RapidIO bus signal name
A1(7)	RD15	B12	A1:7+	RD15-
		B10	A1:7-	RD15+
A1(6)	RD14	A10	A1:6+	RD14+
		A12	A1:6-	RD14-
A1(5)	RD13	B9	A1:5+	RD13-
		B7	A1:5-	RD13+
A1(4)	RD12	A7	A1:4+	RD12+
		A9	A1:4-	RD12-
A1(3)	RD11	B6	A1:3+	RD11-
		B4	A1:3-	RD11+
A1(2)	RD10	A4	A1:2+	RD10+
		A6	A1:2-	RD10-
A1(1)	RD9	B3	A1:1+	RD9-
		B1	A1:1-	RD9+
A1(0)	RD8	A1	A1:0+	RD8+
		A3	A1:0-	RD8-

**Table 3-43: C3 probe channel assignments for transmit bus**

Logic analyzer acquisition channel	RapidIO support package channel name	P6880 pad name	P6880 probe channel name	RapidIO bus signal name
C3(7)	TD15	B12	C3:7+	TD15-
		B10	C3:7-	TD15+
C3(6)	TD14	A10	C3:6+	TD14+
		A12	C3:6-	TD14-
C3(5)	TD13	B9	C3:5+	TD13-
		B7	C3:5-	TD13+
C3(4)	TD12	A7	C3:4+	TD12+
		A9	C3:4-	TD12-
C3(3)	TD11	B6	C3:3+	TD11-
		B4	C3:3-	TD11+
C3(2)	TD10	A4	C3:2+	TD10+
		A6	C3:2-	TD10-
C3(1)	TD9	B3	C3:1+	TD9-

**Table 3-43: C3 probe channel assignments for transmit bus (Cont.)**

Logic analyzer acquisition channel	RapidIO support package channel name	P6880 pad name	P6880 probe channel name	RapidIO bus signal name
		B1	C3:1-	TD9+
C3(0)	TD8	A1	C3:0+	TD8+
		A3	C3:0-	TD8-

**Table 3-44: E3 probe channel assignments for receive bus**

Logic analyzer acquisition channel	RapidIO support package channel name	P6880 pad name	P6880 probe channel name	RapidIO bus signal name
E3(7)	RD7	B12	E3:7+	RD7-
		B10	E3:7-	RD7+
E3(6)	RD6	A10	E3:6+	RD6+
		A12	E3:6-	RD6-
E3(5)	RD5	B9	E3:5+	RD5-
		B7	E3:5-	RD5+
E3(4)	RD4	A7	E3:4+	RD4+
		A9	E3:4-	RD4-
E3(3)	RD3	B6	E3:3+	RD3-
		B4	E3:3-	RD3+
E3(2)	RD2	A4	E3:2+	RD2+
		A6	E3:2-	RD2-
E3(1)	RD1	B3	E3:1+	RD1-
		B1	E3:1-	RD1+
E3(0)	RD0	A1	E3:0+	RD0+
		A3	E3:0-	RD0-

**P6880 probe channels not connected.** A0, A2, C0, C1, C2, D0, D1, D2, D3, E0, E1, and E2 probe channels are not connected and not used.





# Specifications





# Specifications

This section contains the specifications for the support package.

## Specification Table

Table 4-1 lists the electrical requirements that the target system must produce for the support to acquire correct data.

**Table 4-1: Electrical specifications**

Characteristics	Requirements
Target system clock rate TMS805 specified clock rate for state acquisition supports for RIO8 and RIO16	Maximum 375 MHz
TMS805 specified clock rate for timing only supports for RIO8_T and RIO16_T	Maximum 500 MHz
Minimum data valid window required for state acquisition (measured at threshold)	750 ps (typical)





# **Replaceable Parts List**



# Replaceable Parts List

This section contains a list of the replaceable components and modules for the TMS805 RapidIO support. Use this list to identify and order replacement parts.

## Parts Ordering Information

Replacement parts are available through your local Tektronix field office or representative.

Changes to Tektronix products are sometimes made to accommodate improved components as they become available and to give you the benefit of the latest improvements. Therefore, when ordering parts, it is important to include the following information in your order:

- Part number
- Instrument type or model number
- Instrument serial number
- Instrument modification number, if applicable

If you order a part that has been replaced with a different or improved part, your local Tektronix field office or representative will contact you concerning any change in part number.

## Using the Replaceable Parts List

The tabular information in the *Replaceable Parts List* is arranged for quick retrieval. Understanding the structure and features of the list will help you find all of the information you need for ordering replacement parts. The following table describes the content of each column in the parts list.

**Parts list column descriptions**

Column	Column name	Description
1	Figure & index number	Items in this section are referenced by figure and index numbers to the exploded view illustrations that follow.
2	Tektronix part number	Use this part number when ordering replacement parts from Tektronix.
3 and 4	Serial number	Column three indicates the serial number at which the part was first effective. Column four indicates the serial number at which the part was discontinued. No entry indicates the part is good for all serial numbers.
5	Qty	This indicates the quantity of parts used.
6	Name & description	An item name is separated from the description by a colon (:). Because of space limitations, an item name may sometimes appear as incomplete. Use the U.S. Federal Catalog handbook H6-1 for further item name identification.
7	Mfr. code	This indicates the code of the actual manufacturer of the part.
8	Mfr. part number	This indicates the actual manufacturer's or vendor's part number.

**Abbreviations**      Abbreviations conform to American National Standard ANSI Y1.1-1972.

**Chassis Parts**      Chassis-mounted parts and cable assemblies are located at the end of the Replaceable Parts List.

**Mfr. Code to Manufacturer Cross Index**      The table titled Manufacturers Cross Index shows codes, names, and addresses of manufacturers or vendors of components listed in the parts list.

**Manufacturers cross index**

<b>Mfr. code</b>	<b>Manufacturer</b>	<b>Address</b>	<b>City, state, zip code</b>
80009	TEKTRONIX, INC.	P.O. BOX 500	BEAVERTON, OR, 97077-0001

**Replaceable parts list**

<b>Fig. &amp; index number</b>	<b>Tektronix part number</b>	<b>Serial no. effective</b>	<b>Serial no. discont'd</b>	<b>Qty</b>	<b>Name &amp; description</b>	<b>Mfr. code</b>	<b>Mfr. part number</b>
<b>STANDARD ACCESSORIES</b>							
	071-1081-00			1	MANUAL,TECH INSTRUCTION,RapidIO;TMS805	80009	071-1081-00







# Index



# Index

## A

- About this manual set, vii
- Acquiring data, 2-7
- Acquisition setup, 2-2
- Address, Tektronix, viii
- All display format, 2-12
- Analog Mux support, 1-2

## B

- Backward linking, 2-26
- Basic operations, where to find information, vii
- Bus specific fields, 2-18
  - Device ID Width, 2-19
  - Extended Address Size, 2-19
  - Linking Function, 2-19
  - Linking Range, 2-19
  - Select Type, 2-19

## C

- Channel assignments
  - clock and control signals, 3-9
  - Disassembly groups, 3-4
  - RIO8 and RIO16, 3-2
  - RIO8\_T and RIO16\_T, 3-7
  - Rx\_Data group, 3-8, 3-9
  - Rx\_Frame group, 3-6
  - Rx\_Word group, 3-6
  - Setup/Hold calibration groups, 3-2
  - Tx\_Data group, 3-7, 3-8
  - Tx\_Frame group, 3-4
  - Tx\_Word group, 3-5
- Channel groups, 1-4
  - for Receive and Transmit bus, 2-2
  - RIO16, 1-6
  - RIO16\_T, 1-8
  - RIO8, 1-4
  - RIO8\_T, 1-7
  - visibility, 2-11
- Clock and control channel assignments, 3-9
- Clock rate, 1-4
  - target system, 4-1
- Clocking State Machines (CSM)
  - RIO16, 2-5
  - RIO8, 2-5
- Color, symbol table, 3-1
- Color1, symbol table, 3-1

- Connecting to a target system, 1-8
- Connections, Signal Source to Probe , 3-12
- Connections for RIO16 support, 3-17
- Connections for RIO16\_T support, 3-24
- Connections for RIO8 support, 3-13
- Connections for RIO8\_T support, 3-22
- Contacting Tektronix, viii
- Custom clocking, 2-3
  - custom, 2-3
  - RIO16, 2-4
  - RIO8, 2-3
- Cycle type labels, 2-15
  - control symbol name, 2-15
  - linking, 2-27
  - logical layer, 2-15
  - packet continuation, 2-16
  - packet name, 2-15
  - physical layer, 2-15
  - training pattern, 2-16
  - transport layer, 2-15

## D

- Data, acquiring, 2-7
- Data display, changing, 2-17
- Definitions
  - disassembler, vii
  - information on basic operations, vii
  - logic analyzer, vii
- Demonstration file, 2-20
- Device ID Width, 2-19
- Disassembled data
  - conditions, 2-14
  - viewing, 2-10
  - viewing an example, 2-20
- Disassembler
  - definition, vii
  - logic analyzer configuration, 1-3
- Disassembly support, 1-2
- Display formats
  - All, 2-12
  - Packets & Symbols , 2-13
  - Packets Only, 2-13
  - special characters, 2-11

## E

- Electrical specifications, 4-1
  - clock rate, 4-1

Extended Address Size, 2-19

## F

Forward linking, 2-25

## I

Installing support software, 2-1

## L

Limitations of the support, 1-8

Linking cycle type labels, 2-27

Linking Function, 2-19, 2-25

backward, 2-26

forward, 2-25

limitations, 2-27

Linking Range, 2-19

Logic analyzer

configuration for the support, 1-3

definition, vii

software compatibility, 1-3

## M

MagniVu support, 1-2

Manual

conventions, vii

how to use the set, vii

## N

Nonintrusive acquisition, 1-4

## O

Optional display selections, 2-18

## P

P6880, pin assignment recommended, 3-12

P6880 probes, 1-9

Packets & Symbols display format, 2-13

Packets Only display format, 2-13

Phone number, Tektronix, viii

Pin assignment, P6880 recommended, 3-12

Probe to Signal Source connections, 3-12

Product support, contact information, viii

## R

Reference memory, 2-20

Requirements, 1-4

Reset, target system hardware, 1-4

RIO16, 1-1

channel groups, 1-6

clocking state machines, 2-5

custom clocking, 2-4

pin connections, 3-17

signal acquisition, 2-9

RIO16\_T, 1-2

channel groups, 1-8

pin connections, 3-24

RIO8, 1-1

channel groups, 1-4

clocking state machines, 2-5

custom clocking, 2-3

pin connections, 3-13

signal acquisition, 2-7

RIO8 and RIO16, channel assignments, 3-2

RIO8\_T, 1-2

channel groups, 1-7

pin connections, 3-22

RIO8\_T and RIO16\_T, channel assignments, 3-7

Rx\_Data group, channel assignments, 3-8, 3-9

Rx\_Frame group, channel assignments, 3-6

Rx\_Word group, channel assignments, 3-6

## S

Select Type, 2-19

Service support, contact information, viii

Setup/Hold calibration groups

RIO16, 3-3

RIO8, 3-2

Setup/Hold time adjustments, 1-4

application, 2-29

Setups, support, 2-1

Signal acquisition

RIO16, 2-9

RIO8, 2-7

Signal Source to Probe connections, 3-12

Signals not required, RIO8 and RIO16, 3-11

Special characters displayed, 2-11

Special messages, 2-17

Specifications, electrical, 4-1

Support, setup, 2-1

support package, description, 1-1

Support package setups, 2-2

Support setup, 2-1

Symbol table  
  color, 3-1  
  color1, 3-1  
System file, demonstration, 2-20

## T

Target system hardware reset, 1-4  
Technical support, contact information, viii  
Tektronix, contacting, viii  
Terminology, vii  
Trigger programs, 2-21  
  installing, 2-21  
  loading, 2-21  
  RIO16, 2-23  
  RIO8, 2-23  
Triggering support, 1-2

Tx\_Data group, channel assignments, 3-7, 3-8  
Tx\_Frame group, channel assignments, 3-4  
Tx\_Word group, channel assignments, 3-5

## U

URL, Tektronix, viii

## V

Viewing disassembled data, 2-10

## W

Web site address, Tektronix, viii

